

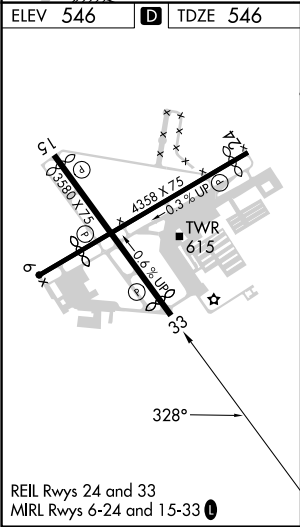
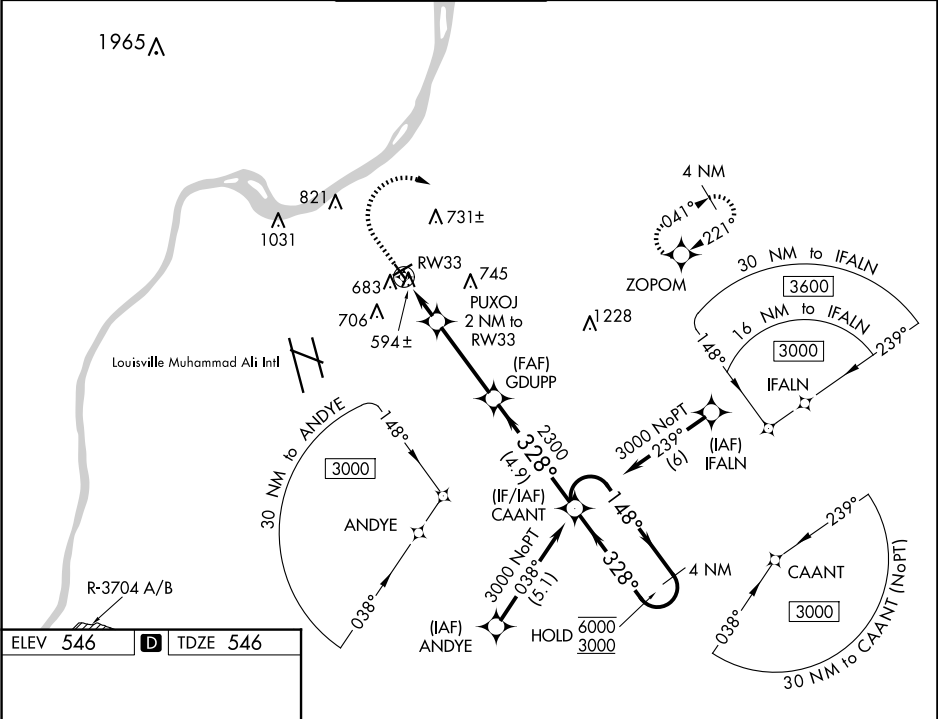
WAAS CH 99526 W33A	APP CRS 328°	Rwy Idg TDZE 546 Apt Elev 546	3125 546
--	------------------------	---	---------------------------

RNAV (GPS) RWY 33

BOWMAN FLD (LOU)

RNP APCH - GPS.		MISSED APPROACH: Climb to 1000 then climbing right turn to 3000 direct ZOPOM and hold.	
<div><div>▼</div><div>▲</div></div>	Rwy 33 helicopter visibility reduction below 1 SM NA. When local altimeter setting not received, use Louisville Muhammad Ali Intl altimeter setting. Straight-in Rwy 33 NA at night, Circling Rwy 6, 15, 33 NA at night.		

ATIS 124.15	LOUISVILLE APP CON 132.075 327.0	BOWMAN TOWER★ 119.5 (CTAF) 257.625	GND CON 121.8	CLNC DEL 118.9	UNICOM 122.95
-----------------------	--	--	-------------------------	--------------------------	-------------------------



1000		3000	ZOPOM	VGSI and descent angles not coincident (VGSI Angle 3.25/TCH 45).	4 NM Holding Pattern
CAANT		148°	328°	6000	3000
RW33		2 NM	3.4 NM	4.9 NM	
CATEGORY	A	B	C	D	
LP MDA	860-1	314 (400-1)	NA		
LNAV MDA	920-1	374 (400-1)	NA		
CIRCLING	1060-1 514 (600-1)	1080-1 534 (600-1)	NA		