

LOM LK	APP CRS	Rwy Idg	3125
414	348°	TDZE	546
		Apt Elev	546

NDB RWY 33

BOWMAN FLD (LOU)

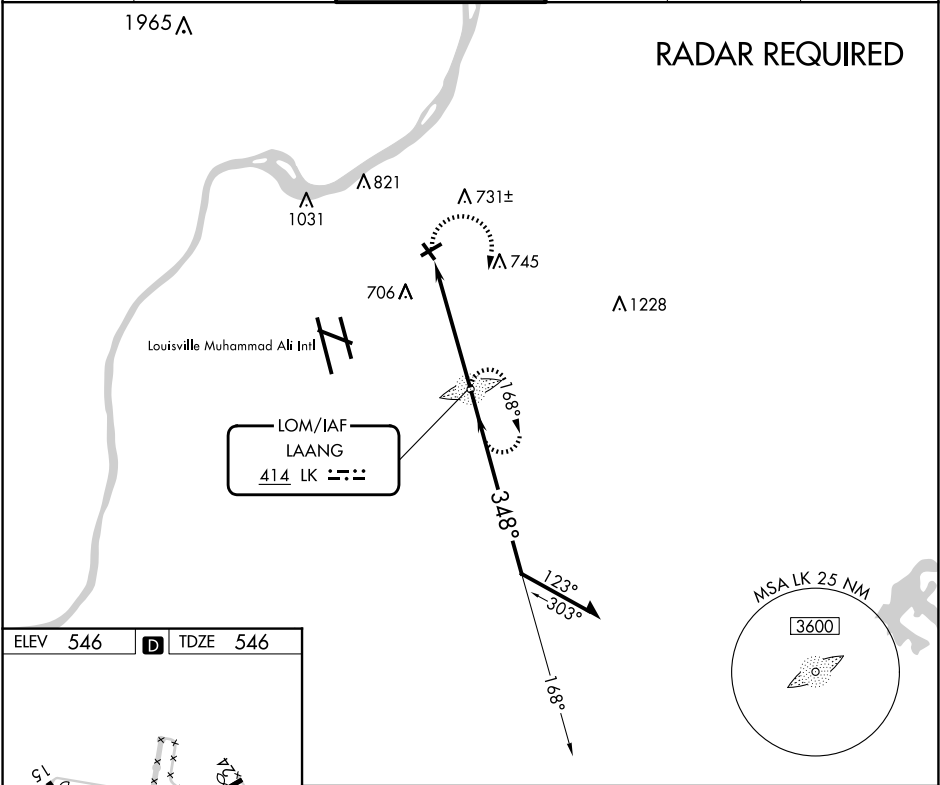
⚠

When local altimeter setting not received, use Louisville Muhammad Ali Intl altimeter setting. Rwy 33 helicopter visibility reduction below 1 SM NA. Straight-in Rwy 33 NA at night, Circling Rwy 6, 15, 33 NA at night.

MISSED APPROACH:

Climbing right turn to 2500 direct LAANG LOM and hold.

ATIS	LOUISVILLE APP CON	BOWMAN TOWER★	GND CON	CLNC DEL	UNICOM
124.15	132.075 327.0	119.5 (CTAF) 257.625	121.8	118.9	122.95



ELEV 546

D

TDZE 546

REIL Rws 24 and 33

MIRL Rws 6-24 and 15-33

Knots	60	90	120	150	180
Min:Sec	4:54	3:16	2:27	1:58	1:38

2500

LK

LAANG LOM

Remain within 10 NM

CATEGORY	A	B	C	D
S-33	1160-1	614 (700-1)	NA	
CIRCLING	1160-1	614 (700-1)	NA	

SE-1, 07 AUG 2025 to 04 SEP 2025

SE-1, 07 AUG 2025 to 04 SEP 2025