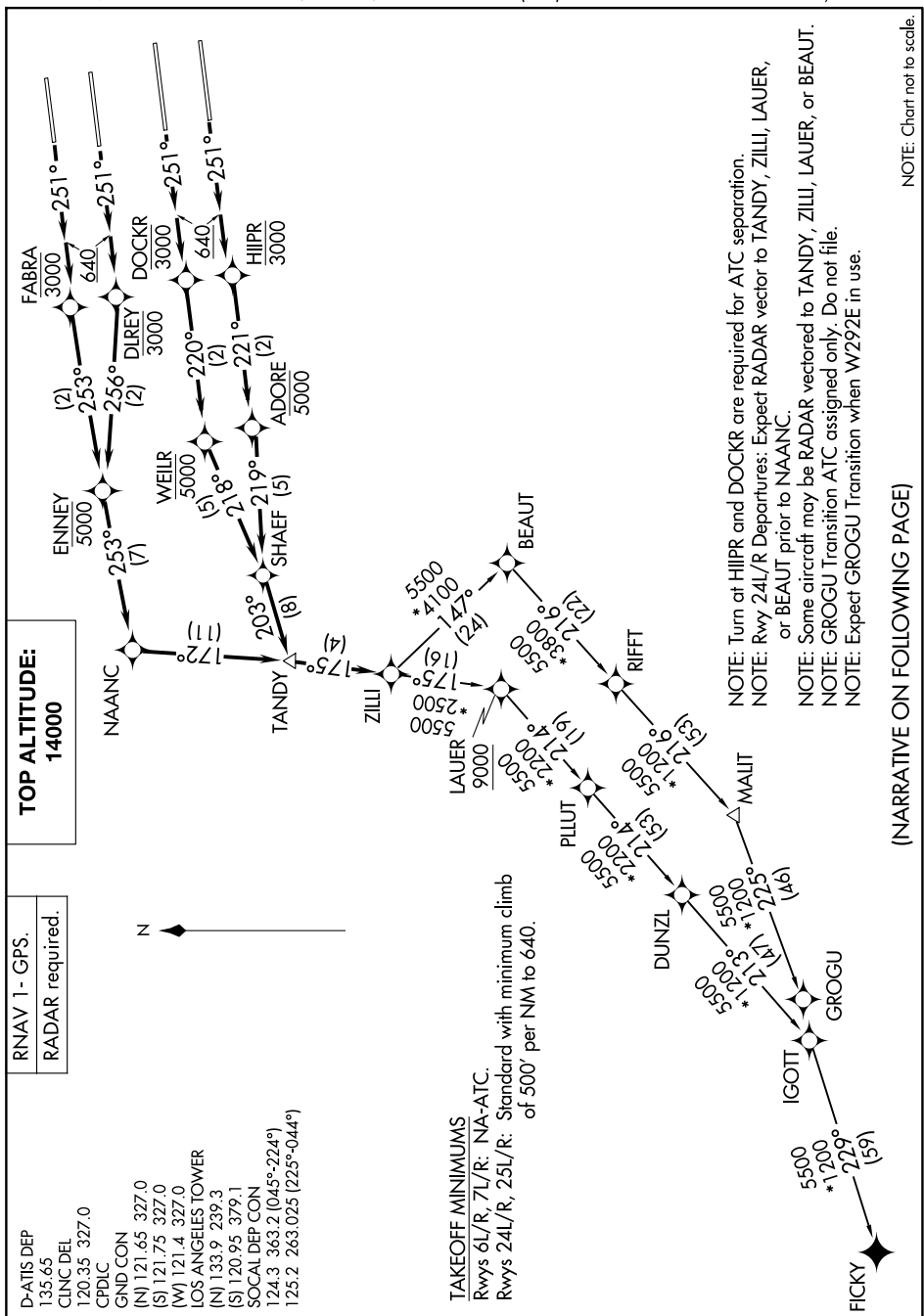


ZILLI FIVE DEPARTURE (RNAV)

AL-237 (FAA)

LOS ANGELES INTL (LAX)

LOS ANGELES, CALIFORNIA



TOP ALTITUDE:

14000

RNAV 1 - GPS.

RADAR required.

D-ATIS DEP
135.65
CLNC DEL
120.35 327

GND CON	(N)	121.65	327.0
---------	-----	--------	-------

LOS ANGELES TOWER
[W] 121.4 327.0
[S] 121.7 327.0

(N) 133.9 239.3
(S) 120.95 379.1
SOCAL DEP CON
124.3 363.2 (045°-224°)
125.2 263.025 (225°-044°)



TAKEOFF MINIMUMS

Rwys 6L/R, 7L/R: NA-ATC.

Standard with minimum climb of 500' per NM to 640.

NOTE: Turn at HIIPR and DOCKR are required for ATC separation.

NOTE: Rwy 24L/R Departures: Expect RADAR vector to TANDY, ZILLI, LAUER, or BEAUT prior to NAAANC.

NOTE: Some aircraft may be RADAR vectored to TANDY, ZILLI, LAUER, or BEAUT.

NOTE: GROGU Transition ATC assigned only. Do not file.

NOTE: Expect GROGU Transition when W292E in use.

[illegible]

(NARRATIVE ON FOLLOWING PAGE)

NOTE: Chart not to scale.

SW-3, 07 AUG 2025 to 04 SEP 2025

ZILLI FIVE DEPARTURE (RNAV)

(ZILLI5.ZILLI) 23FEB23

LOS ANGELES, CALIFORNIA
LOS ANGELES INTL (LAX)