

SW-3, 07 AUG 2025 to 04 SEP 2025

TOP ALTITUDE:
OTAYY and TCATE TRANSITIONS:
ASSIGNED BY ATC;
BEALE, CLEEE, MISEN AND
CNERY TRANSITIONS: 17000

RNAV 1 - DME/DME/IRU or GPS.
RADAR required for non-GPS equipped aircraft.

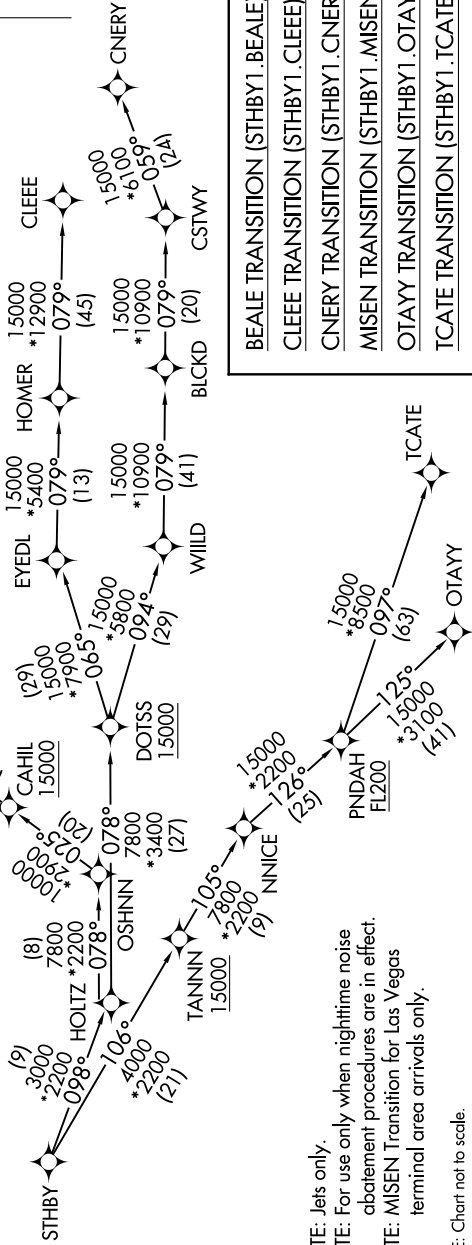
TAKEOFF MINIMUMS

- Rwy 24L: Standard with minimum climb of 280' per NM to 628.
- Rwy 24R: Standard with minimum climb of 260' per NM to 628.
- Rwy 25L: Standard with minimum climb of 230' per NM to 628.
- Rwy 25R: Standard with minimum climb of 260' per NM to 628.

D-ATIS DEP 135.65
CLNC DEL 120.35 327.0
CPDLC
GND CON (N) 121.65 327.0
(S) 121.75 327.0
(W) 121.4 327.0
LOS ANGELES TOWER (N) 133.9 239.3
(S) 120.95 379.1
SOCAL DEP CON 124.3 363.2 [045°-224°]
125.2 263.025 [225°-044°]



NSA LAX 25 NM
7800



- NOTE: Jets only.
- NOTE: For use only when nighttime noise abatement procedures are in effect.
- NOTE: MISEN Transition for Las Vegas terminal area arrivals only.
- NOTE: Chart not to scale.

BEALE TRANSITION [STHBY1.BEALE]
CLEEE TRANSITION [STHBY1.CLEEE]
CNERY TRANSITION [STHBY1.CNERY]
MISEN TRANSITION [STHBY1.MISEN]
OTAYY TRANSITION [STHBY1.OTAYY]
TCATE TRANSITION [STHBY1.TCATE]