

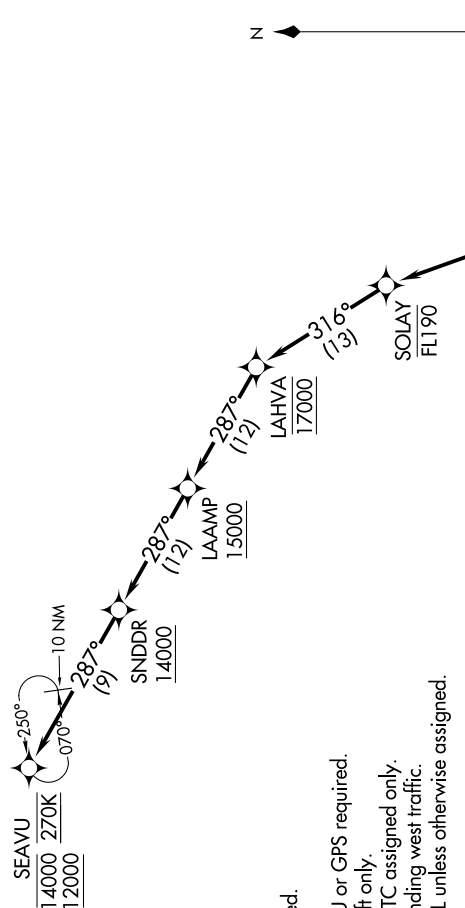
SNSTT TWO ARRIVAL (RNAV)

AL-237 (FAA)

LOS ANGELES INTL (LAX)

LOS ANGELES, CALIFORNIA

SOCAL APP CON
124.05 353.775
D-ATIS ARR
133.8
LOS ANGELES TOWER
(N) 133.9 239.3
(S) 120.95 379.1



NOTE: RADAR required.
NOTE: RNAV 1.
NOTE: DME/DME/IRU or
NOTE: Turbojet aircraft or
NOTE: SNSTT STAR ATC
NOTE: Los Angeles landing
NOTE: Expect Rwy 25L use

NOTE: Chart not to scale.

ARRIVAL ROUTE DESCRIPTION

From AMMOR on track 289° to cross RNCHO at or above FL260, then on track 298° to cross SNSTT between FL240 and FL260 and at 280K, then on track 328° to cross SOLAY at or below FL190, then on track 316° to cross LAHVA at 17000, then on track 287° to cross LAAMP at or above 15000, then on track 287° to cross SNDDR at or above 14000, then on track 287° to cross SEAVU between 12000 and 14000 and at 270K. Expect ILS or RNAV (RNP) RWY 25L approach.

LOST COMMUNICATIONS

In the event of lost communication prior to runway assignment proceed on ILS or LOC RWY 25L.

SW-3, 07 AUG 2025 to 04 SEP 2025

SNSTT TWO ARRIVAL (RNAV)

(AMMOR.SNSTT2) 01FEB18

LOS ANGELES, CALIFORNIA
LOS ANGELES INTL (LAX)