

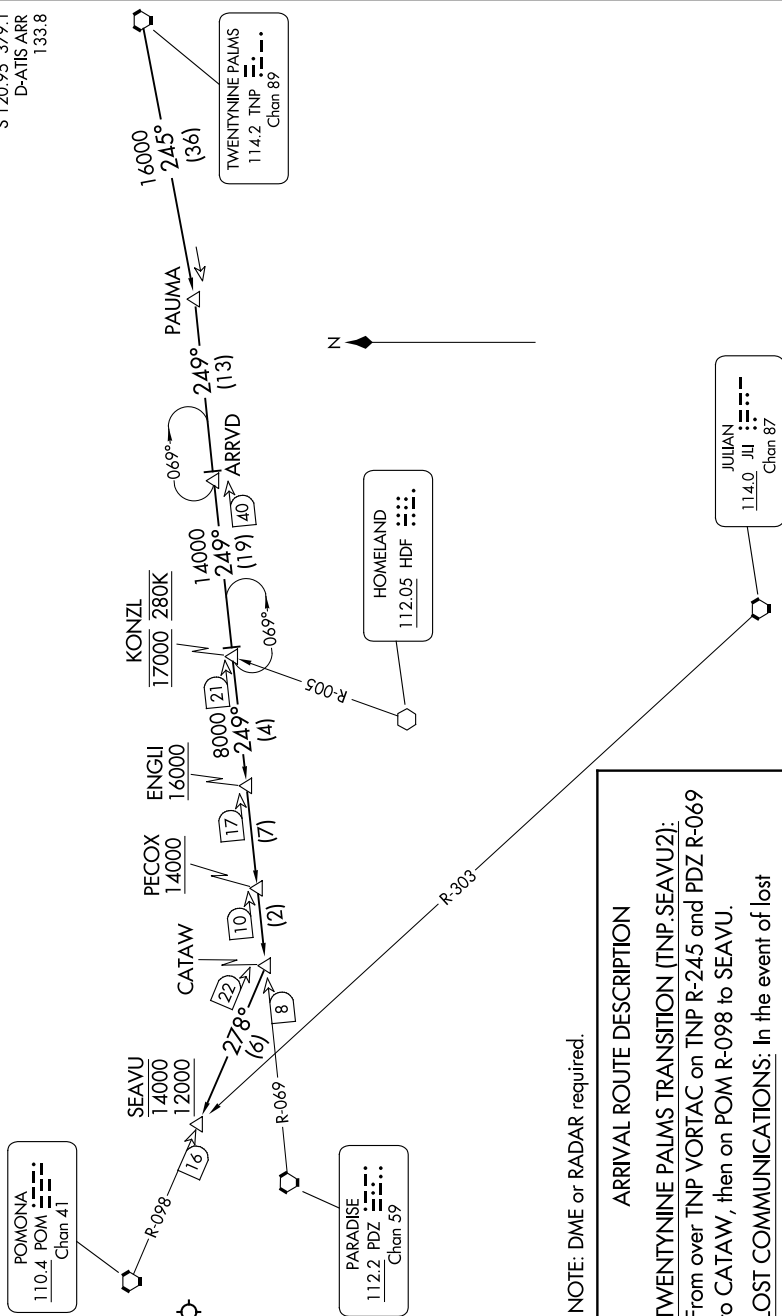
SEAVU TWO ARRIVAL

AL-237 (FAA)

LOS ANGELES INTL (LAX)
LOS ANGELES, CALIFORNIA

SOCAL APP CON
124.05 353.775
LOS ANGELES TOWER
N 133.9 239.3
S 120.95 379.1
D-ATIS ARR
133.8

NOTE: Expect runway assignment on initial contact with Southern California TRACON.
In the event of lost communications prior to runway assignment proceed via ILS Rwy 25L.



NOTE: Chart not to scale.

NOTE: DME or RADAR required.

ARRIVAL ROUTE DESCRIPTION

LOST COMMUNICATIONS: In the event of lost communication prior to runway assignment proceed via ILS Rwy 25L.

SW-3, 07 AUG 2025 to 04 SEP 2025

SEAVU TWO ARRIVAL

(SEAVU.SEAVU2) 25SEP08

LOS ANGELES, CALIFORNIA
LOS ANGELES INTL (LAX)