


| | | |
|--|------------------------|--|
| WAAS CH 42504 W07A | APP CRS 071° | Rwy Ldg 11259 TDZE 128 Apt Elev 128 |
|--|------------------------|--|

RNAV (GPS) Y RWY 7L
LOS ANGELES INTL (LAX)

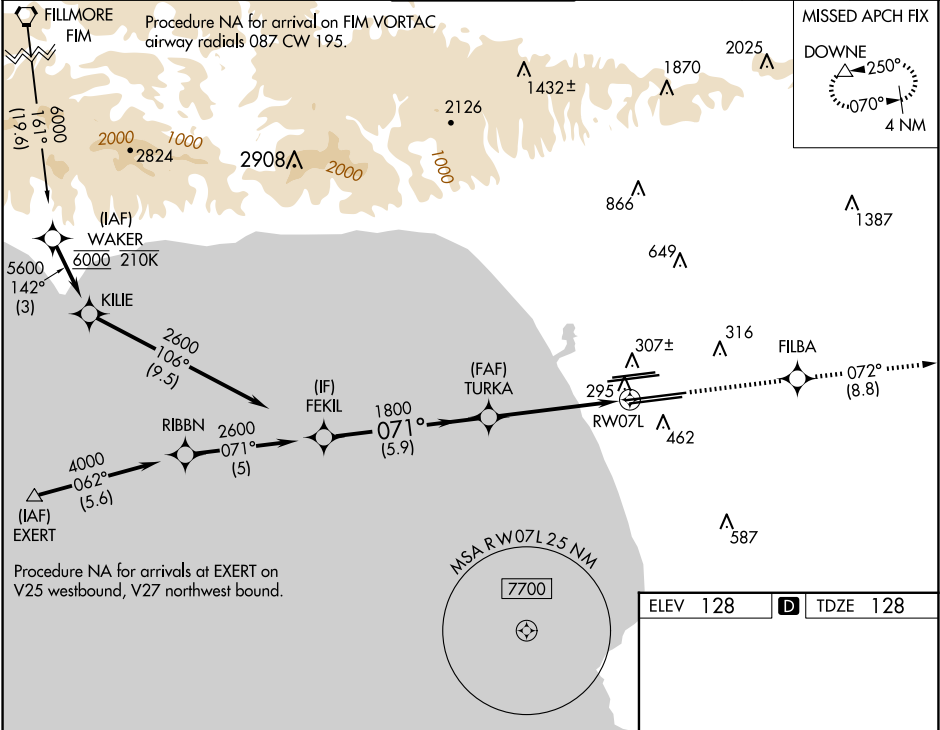
▽ For uncompensated Baro-VNAV systems, LNAV/VNAV NA below 5°C (41°F) or above 54°C (130°F). DME/DME RNP -0.3 NA. LNAV procedure NA during simultaneous operations. Use of FD or AP providing RNAV track guidance required during simultaneous operations. Simultaneous approach authorized.

MALSR



MISSED APPROACH: Climb to 3000 direct FILBA and on track 072° to DOWNE and hold.

| | | | | | |
|---|--|--|---|---|-------|
| D-ATIS ARR 133.8 DEP 135.65 | SOCAL APP CON 124.3 363.2 (APCH FM WEST) 124.5 235.975 (225°-044°) 124.9 269.0 (090°-224°) 128.5 360.7 (045°-089°) | LOS ANGELES TOWER N 133.9 239.3 S 120.95 379.1 | GND CON N 121.65 327.0 S 121.75 327.0 W 121.4 327.0 | CLNC DEL 120.35 327.0 | CPDLC |
|---|--|--|---|---|-------|



| | | | | | | | | | | | | |
|---|--------|---------------------|-------------|------------|--------|---------|-------------|------------|--|--|--|--|
| VGSI and RNAV glidepath not coincident (VGSI Angle 3.00/TCH 83). | | 3000 ↑ | | FILBA ✦ | | tr 072° | | DOWNE △ | | | | |
| | | *1.1 NM to RW07L | | *LNAV only | | | | | | | | |
| GP 3.00° TCH 59 | | 5.9 NM | | 4 NM | | 1.1 NM | | | | | | |
| CATEGORY | A | | B | | C | | D | | | | | |
| LPV DA | 344/18 | | 216 (300-½) | | | | | | | | | |
| LNAV/ VNAV DA | 464/30 | | 336 (400-¾) | | | | | | | | | |
| LNAV MDA | 560/24 | | 432 (500-½) | | 560/40 | | 432 (500-¾) | | | | | |
| TDZ/CL Rwy 6R, 7L, 24R, and 25L HIRL all Rwy's | | | | | | | | | | | | |

SW-3, 07 AUG 2025 to 04 SEP 2025

SW-3, 07 AUG 2025 to 04 SEP 2025