

WAAS CH <b>61207</b> <b>W06B</b>	APP CRS <b>071°</b>	Rwy Ldg <b>9748</b> TDZE <b>116</b> Apt Elev <b>128</b>
--	------------------------	---

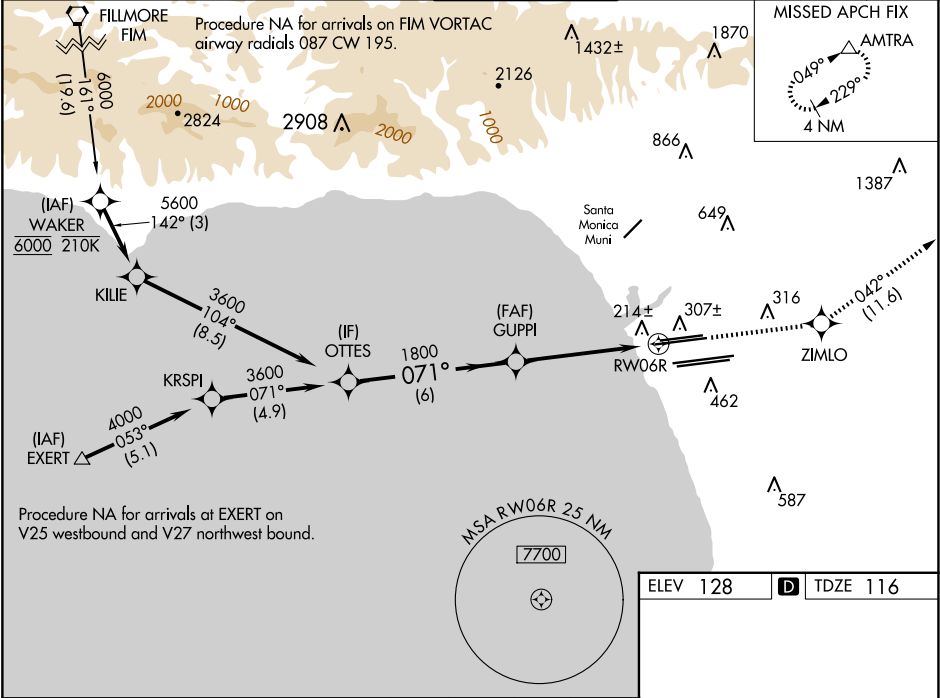
RNAV (GPS) Y RWY 6R  
LOS ANGELES INTL (LAX)

▼ For uncompensated Baro-VNAV systems, LNAV/VNAV NA below 5°C (41°F) or above 54°C (130°F). DME/DME RNP-0.3 NA. For inop ALS, increase LNAV/VNAV all Cats visibility to RVR 4500, LNAV Cat C and D visibility to RVR 5500. Simultaneous approach authorized. LNAV procedure NA during simultaneous operations. Use of FD or AP providing RNAV track guidance required during simultaneous operations.  
# RVR 1800 authorized with use of FD or AP or HUD to DA.

MALSR

MISSED APPROACH:  
Climb to 3000 direct ZIMLO and track 042° to AMTRA and hold.

D-ATIS ARR <b>133.8</b> DEP <b>135.65</b>	SOCAL APP CON <b>124.3 363.2</b> (APCH FM WEST) <b>124.5 235.975</b> (225°-044°)	<b>124.9 269.0</b> (090°-224°) <b>128.5 360.7</b> (045°-089°)	LOS ANGELES TOWER <b>N 133.9 239.3</b> <b>S 120.95 379.1</b>	GND CON <b>N 121.65 327.0</b> <b>S 121.75 327.0</b> <b>W 121.4 327.0</b>	CLNC DEL <b>120.35 327.0</b>	CPDLC
---	--	--	--	---	---------------------------------	-------



VGSI and RNAV glidepath not coincident (VGSI Angle 3.00/TCH 69).

CATEGORY	A	B	C	D
LPV DA#	316/24 200 (200-½)			
LNAV/VNAV DA	398/24 282 (300-½)			
LNAV MDA	480/24 364 (400-½)		480/35 364 (400-¾)	

TDZ/CL Rwy 6R, 7L, 24R, and 25L  
HIRL all Rwy's

SW-3, 07 AUG 2025 to 04 SEP 2025

SW-3, 07 AUG 2025 to 04 SEP 2025