

WAAS CH 82507 W06A	APP CRS 071°	Rwy Ldg TDZE 119 Apt Elev 128
--	------------------------	---

RNAV (GPS) Y RWY 6L

LOS ANGELES INTL (LAX)

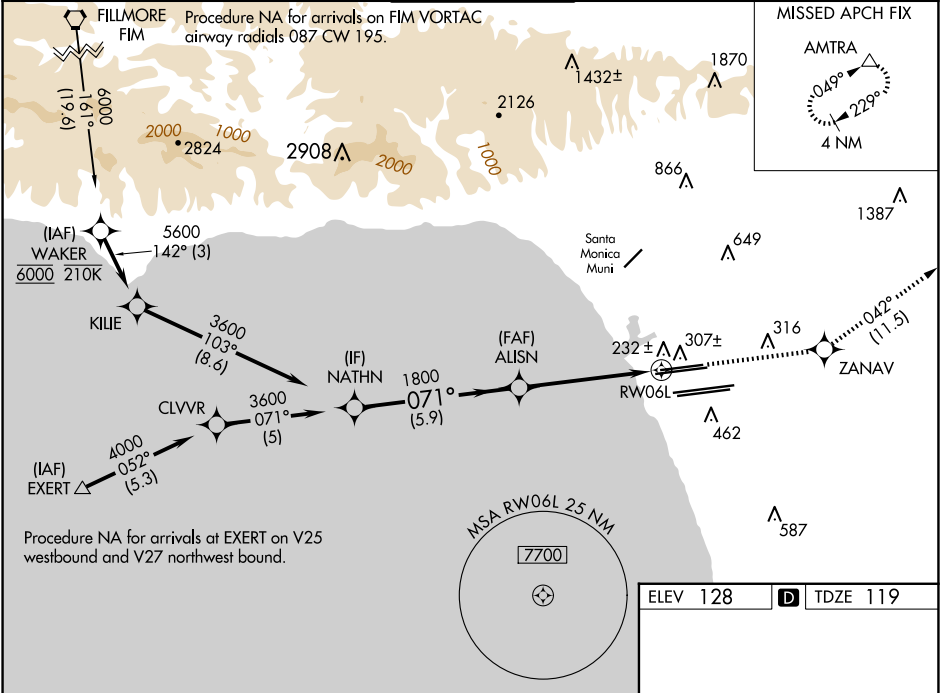
▼

For uncompensated Baro-VNAV systems, LNAV/VNAV NA below 5°C (41°F) or above 54°C (130°F). DME/DME RNP-0.3 NA. LNAV procedure NA during simultaneous operations. Use of FD or AP providing RNAV track guidance required during simultaneous operations. Simultaneous approach authorized.

MALSR

MISSED APPROACH: Climb to 3000 direct ZANAV and track 042° to AMTRA and hold.

D-ATIS ARR 133.8 DEP 135.65	SOCAL APP CON 124.3 363.2 124.9 269.0 (APCH FM WEST) (090°-224°) 124.5 235.975 128.5 360.7 (225°-044°) (045°-089°)	LOS ANGELES TOWER N 133.9 239.3 S 120.95 379.1	GND CON N 121.65 327.0 S 121.75 327.0 W 121.4 327.0	CLNC DEL 120.35 327.0	CPDLC
---	--	--	---	---------------------------------	-------



VGSI and RNAV glidepath not coincident (VGSI Angle 3.00/TCH 77).		3000	ZANAV	tr 042°	AMTRA
GP 3.00° TCH 55					
CATEGORY	A	B	C	D	
LPV DA	369/24		250 (300-½)		
LNAV/ VNAV	411/24		292 (300-½)		
LNAV MDA	500/24 381 (400-½)		500/35 381 (400-¾)		
					TDZ/CL Rwy 6R, 7L, 24R, and 25L HIRL all Rwy