

WAAS CH 49007 W25B	APP CRS 251°	Rwy Ldg 11134 TDZE 104 Apt Elev 128
--	------------------------	--


RNAV (GPS) Y RWY 25R

LOS ANGELES INTL (LAX)

RNP APCH.

For uncompensated Baro-VNAV systems, LNAV/VNAV NA below 5°C or above 54°C. Simultaneous approach authorized. Simultaneous approach authorized with HHR. LNAV procedure NA during simultaneous operations. Use of FD or AP required during simultaneous operations. # RVR 1800 authorized with use of FD or AP or HUD to DA.

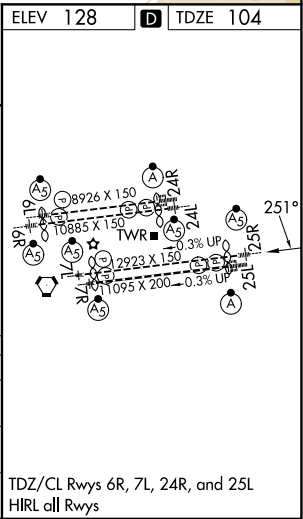
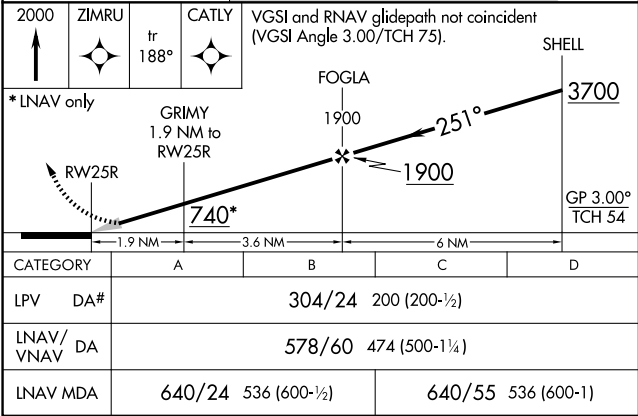
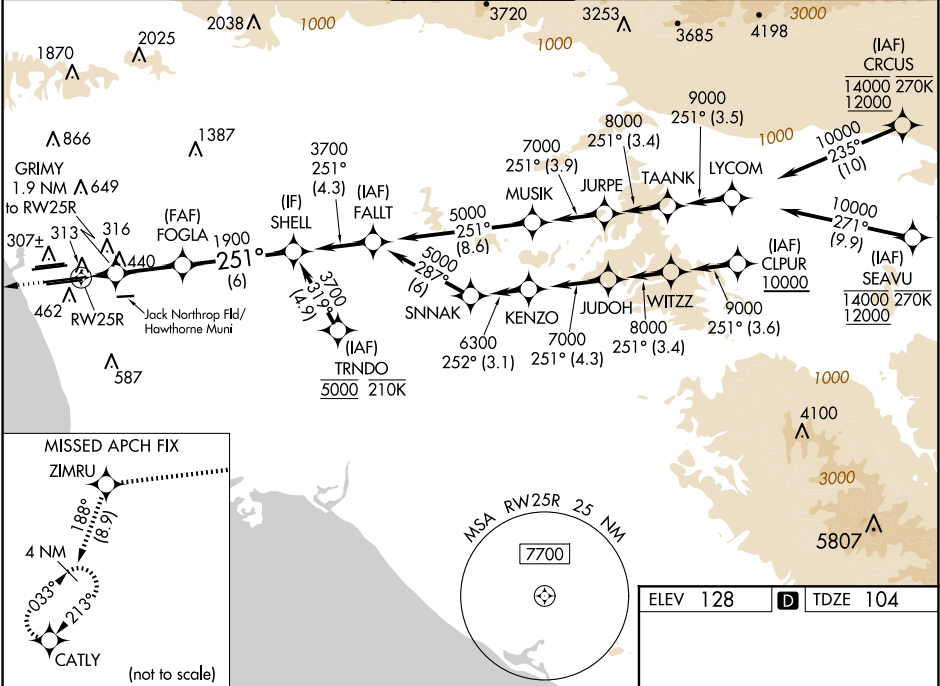
MALSR



MISSED APPROACH:

Climb to 2000 direct ZIMRU and track 188° to CATLY and hold.

D-ATIS ARR 133.8 DEP 135.65	SOCAL APP CON (APCH FM WEST) 124.3 363.2 (225°-044°)	124.9 269.0 (090°-224°)	128.5 360.7 (045°-089°)	LOS ANGELES TOWER N 133.9 239.3 S 120.95 379.1	GND CON N 121.65 327.0 S 121.75 327.0 W 121.4 327.0	CLNC DEL 120.35 327.0	CPDLC
---	--	-----------------------------------	-----------------------------------	--	---	---------------------------------	-------



SW-3, 07 AUG 2025 to 04 SEP 2025

SW-3, 07 AUG 2025 to 04 SEP 2025