

WAAS CH 56407 W24B	APP CRS 251°	Rwy Ldg 9483 TDZE 123 Apt Elev 128
--	------------------------	---

RNAV (GPS) Y RWY 24L

LOS ANGELES INTL (LAX)

RNP APCH.

▼ Simultaneous approach authorized. LNAV procedure NA during simultaneous operations. Use of FD or AP providing RNAV track guidance required during simultaneous operations. Simultaneous approach authorized with HHR. For uncompensated Baro-VNAV systems, LNAV/VNAV NA below 5°C or above 54°C. For inop ALS, increase LNAV/VNAV all Cnts visibility to 1 1/2 SM. #RVR 1800 authorized with use of FD or AP or HUD to DA.

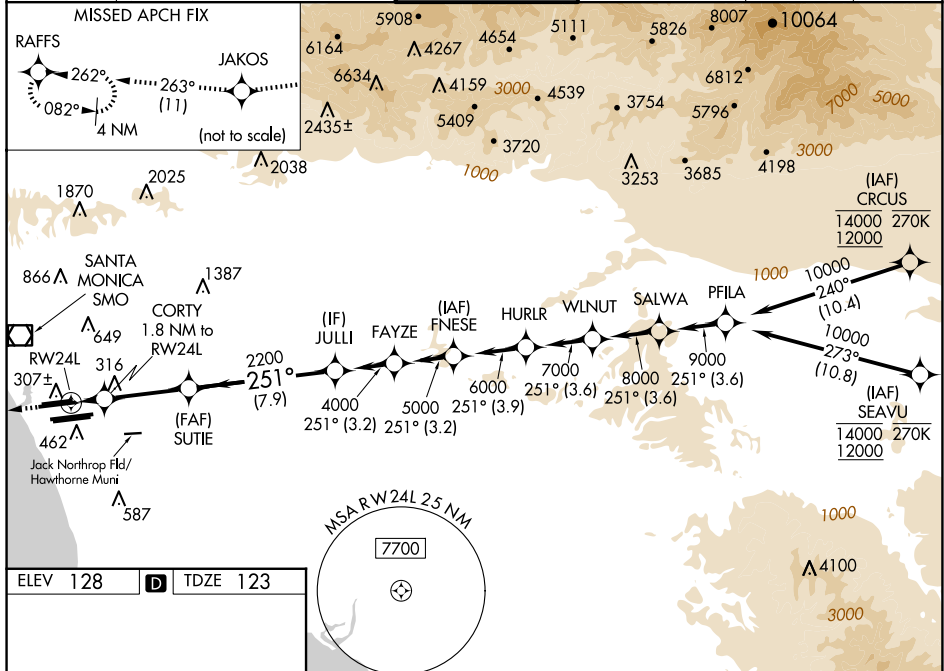
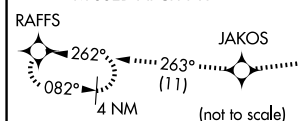
MALSR



MISSED APPROACH:
Climb to 2000 direct
JAKOS and on track 263°
to RAFFES and hold.

	SOCAL APP CON	LOS ANGELES TOWER	GND CON	CLNC DEL	CPDLC
D-ATIS	124.3 363.2	124.9 269.0	N 121.65 327.0	120.35	
ARR 133.8	(APCH FM WEST)	(090°-224°)	S 121.75 327.0	327.0	
DEP 135.65	124.5 235.975	128.5 360.7	W 121.4 327.0		
	(225°-044°)	(045°-089°)			

MISSED APCH FIX



CATEGORY	A	B	C	D
LPV DA#	323/24 200 (200-½)			
LNAV/VNAV DA	608/50 485 (500-1)			
LNAV MDA	660/24 537 (600-½)		660/55 537 (600-1)	

TDZ/CL Rwy's 6R, 7L, 24R, and 25L
HIRL all Rwy's