


APP CRS	Rwy Ldg	11259
071°	TDZE	128
	Apt Elev	128

RNAV (RNP) Z RWY 7L
LOS ANGELES INTL (LAX)

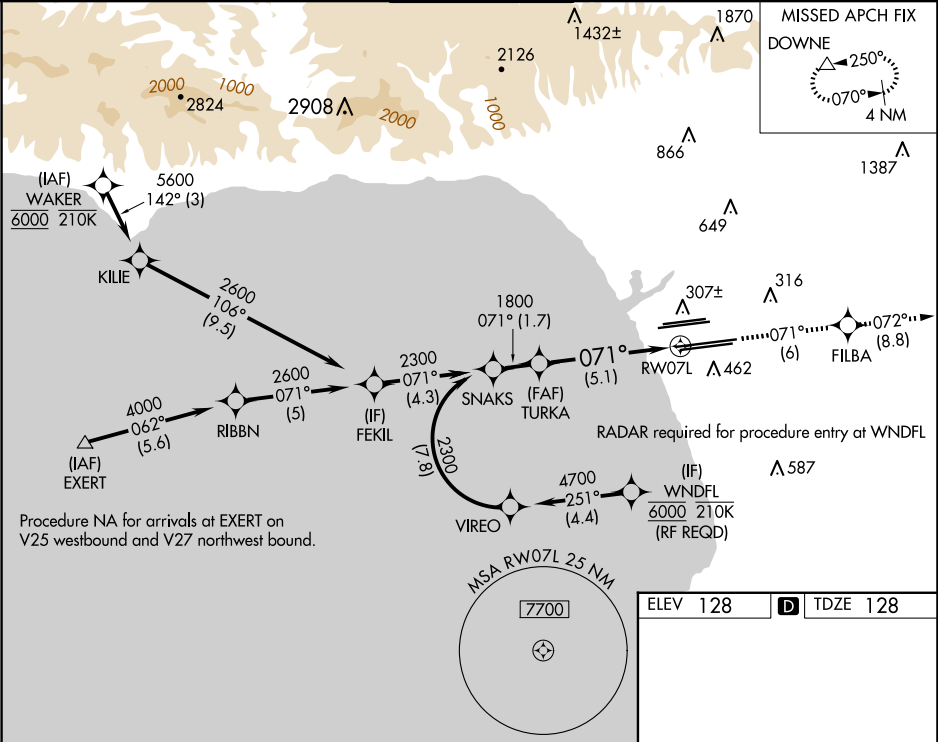
V For uncompensated Baro-VNAV systems, procedure NA below 5°C (41°F) or above 54°C (130°F). GPS required. Simultaneous approach authorized. For inop ALS, increase RNP 0.11 all Cats visibility to RVR 5000 and RNP 0.30 all Cats visibility to RVR 6000.

MALSR



MISSED APPROACH: Climb to 3000 on track 071° to FILBA and on track 072° to DOWNE and hold.

D-ATIS	SOCAL APP CON	LOS ANGELES TOWER	GND CON	CLNC DEL	CPDLC
ARR 133.8	124.3 363.2	N 133.9 239.3	N 121.65 327.0	120.35	
DEP 135.65	124.5 235.975	S 120.95 379.1	S 121.75 327.0	327.0	
	(225°-044°)	(090°-224°)	W 121.4 327.0		
		(045°-089°)			



VGSI and RNAV glidepath not coincident (VGSI Angle 3.00/TCH 83).

3000
↑
tr 071°

FILBA

tr 072°

DOWNE

2300 1800

GP 3.00°
TCH 59

1.7 NM 5.1 NM

CATEGORY	A	B	C	D
RNP 0.11 DA		441/24	313 (400-½)	
RNP 0.30 DA		485/40	357 (400-¾)	

AUTHORIZATION REQUIRED

ELEV 128

D TDZE 128

TDZ/CL Rwy's 6R, 7L, 24R, and 25L
HIRL all Rwy's

SW-3, 07 AUG 2025 to 04 SEP 2025

SW-3, 07 AUG 2025 to 04 SEP 2025