

APP CRS	Rwy Ldg	9748
071°	TDZE	116
	Apt Elev	128

RNAV (RNP) Z RWY 6R

LOS ANGELES INTL (LAX)

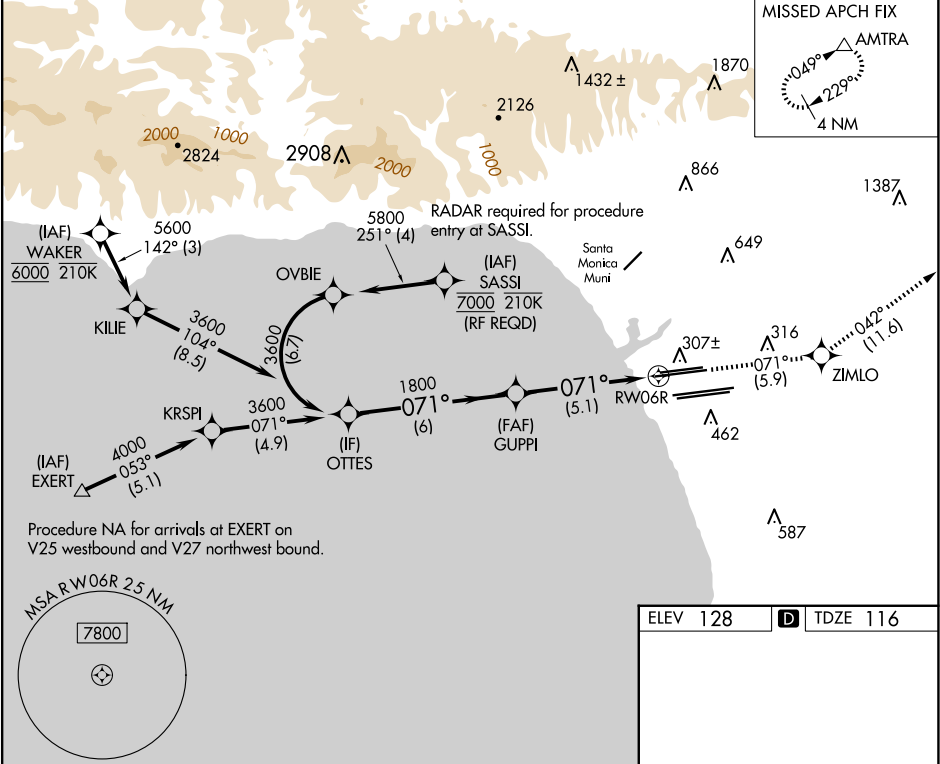
▼

For uncompensated Baro-VNAV systems, procedure NA below 5°C (41°F) or above 54°C (130°F). GPS required. Simultaneous approach authorized. For inop ALS, increase RNP 0.30 all Cats visibility to RVR 6000.

MALSR

MISSED APPROACH: Climb to 3000 on track 071° to ZIMLO and on track 042° to AMTRA and hold.

D-ATIS	SOCAL APP CON	LOS ANGELES TOWER	GND CON	CLNC DEL	CPDLC
ARR 133.8	124.3 363.2	124.9 269.0	N 121.65 327.0	120.35	
DEP 135.65	124.5 235.975	128.5 360.7	S 121.75 327.0	327.0	
	(225°-044°)	(090°-224°)	W 121.4 327.0		
		(045°-089°)			



VGSI and RNAV glidepath not coincident (VGSI Angle 3.00/TCH 69).			
OTTES	GUPPI	ZIMLO	AMTRA
3600	1800	3000	
GP 3.00°		tr 071°	tr 042°
TCH 53			
CATEGORY	A	B	C
RNP 0.30	DA	471/40	355 (400-¾)
AUTHORIZATION REQUIRED			

ELEV 128

TDZE 116

TDZ/CL Rwy 6R, 7L, 24R, and 25L
HIRL all Rwy's