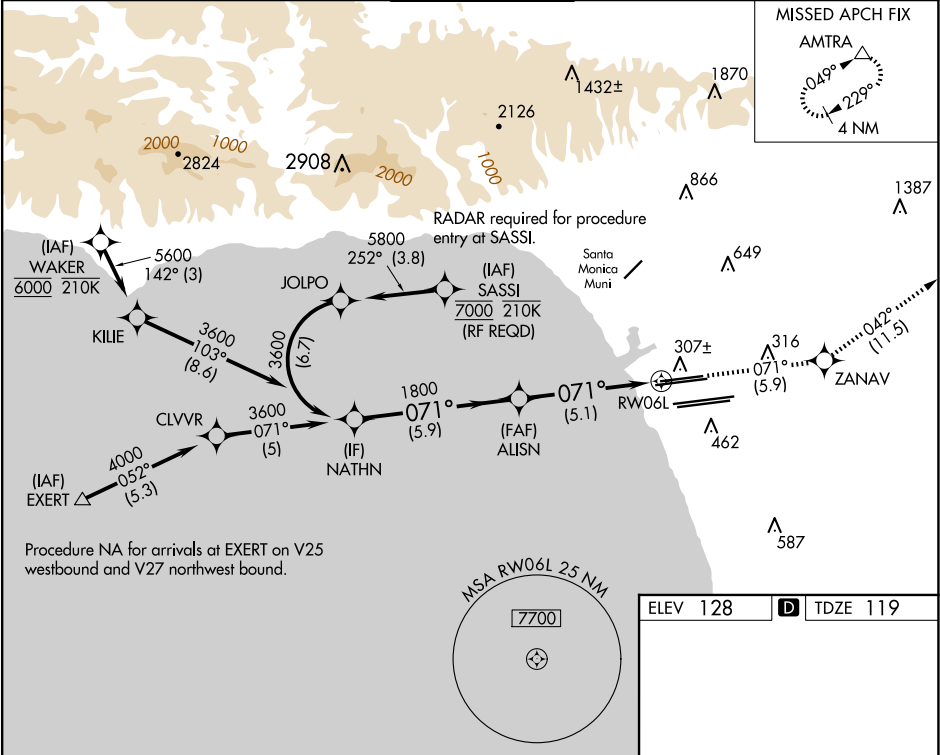


APP CRS	Rwy Ldg	8566
071°	TDZE	119
	Apt Elev	128

RNAV (RNP) Z RWY 6L  
LOS ANGELES INTL (LAX)

<div><div>▼</div><div>For uncompensated Baro-VNAV systems, procedure NA below 5°C (41°F) or above 54°C (130°F). Simultaneous approach authorized. GPS required. For inop MALSR, increase RNP 0.30 all Cats visibility to RVR 6000.</div></div>	<div><div>MALSR</div><div></div></div>	<div>MISSED APPROACH: Climb to 3000 on track 071° to ZANAV and on track 042° to AMTRA and hold.</div>
--	--	---

D-ATIS	SOCAL APP CON	LOS ANGELES TOWER	GND CON	CLNC DEL	CPDLC
ARR 133.8	124.3 363.2	N 133.9 239.3	N 121.65 327.0	120.35	
DEP 135.65	124.5 235.975	S 120.95 379.1	S 121.75 327.0	327.0	
	(225°-044°)	(090°-224°)	W 121.4 327.0		
		(045°-089°)			



VGSi and RNAV glidepath not coincident (VGSi Angle 3.00/TCH 77).		3000	ZANAV	AMTRA
NATHN		↑		△
3600		tr 071°	tr 042°	
GP 3.00°		RW06L		
TCH 55				
5.9 NM		5.1 NM		
CATEGORY	A	B	C	D
RNP 0.30 DA	484/40 365 (400-¾)			
AUTHORIZATION REQUIRED				
TDZ/CL Rwy 6R, 7L, 24R, and 25L HIRL all Rwy				

SW-3, 07 AUG 2025 to 04 SEP 2025

SW-3, 07 AUG 2025 to 04 SEP 2025