

APP CRS	Rwy Ldg	11134
251°	TDZE	104
	Apt Elev	128

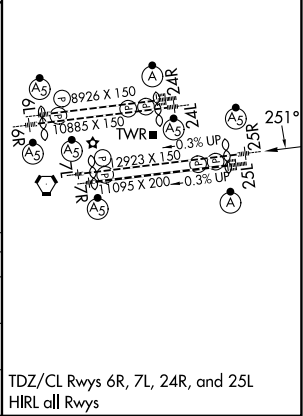
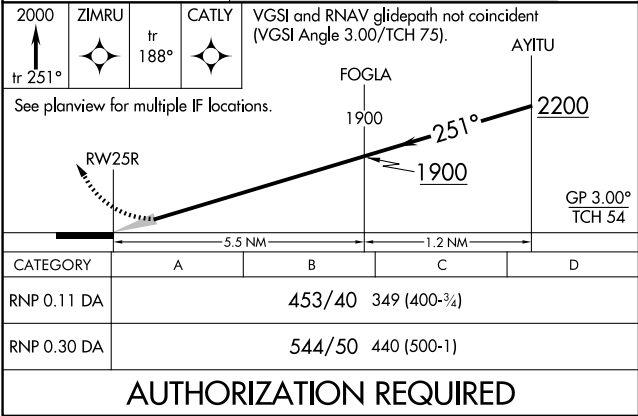
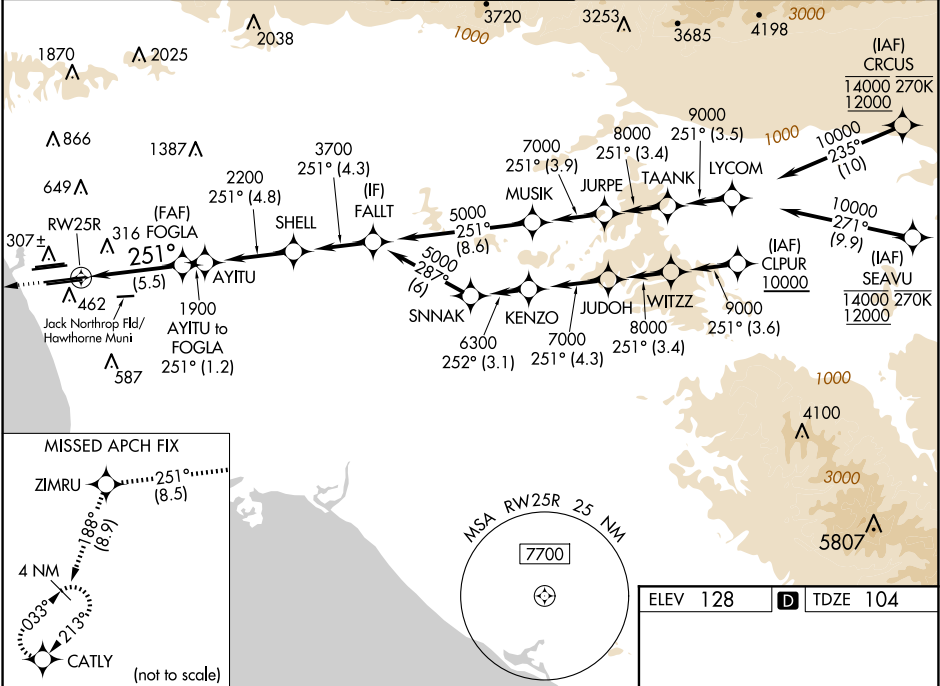
RNAV (RNP) Z RWY 25R
LOS ANGELES INTL (LAX)

For uncompensated Baro-VNAV systems, procedure NA below 5°C (41°F) or above 54°C (130°F). Simultaneous approach authorized. Simultaneous approach authorized with HHR. GPS required. For inop ALS, increase RNP 0.11 all Cats visibility to RVR 6000.

MALSR

MISSED APPROACH: Climb to 2000 on track 251° to ZIMRU and track 188° to CATLY and hold.

D-ATIS	SOCAL APP CON		LOS ANGELES TOWER		GND CON		CLNC DEL	CPDLC
ARR 133.8	124.3	363.2	124.9	269.0	N 121.65	327.0	120.35	
DEP 135.65	(APCH FM WEST)		(090°-224°)		S 121.75	327.0	327.0	
	124.5		235.975		W 121.4	327.0		
	(225°-044°)		128.5					
			(045°-089°)					



SW-3, 07 AUG 2025 to 04 SEP 2025

SW-3, 07 AUG 2025 to 04 SEP 2025