

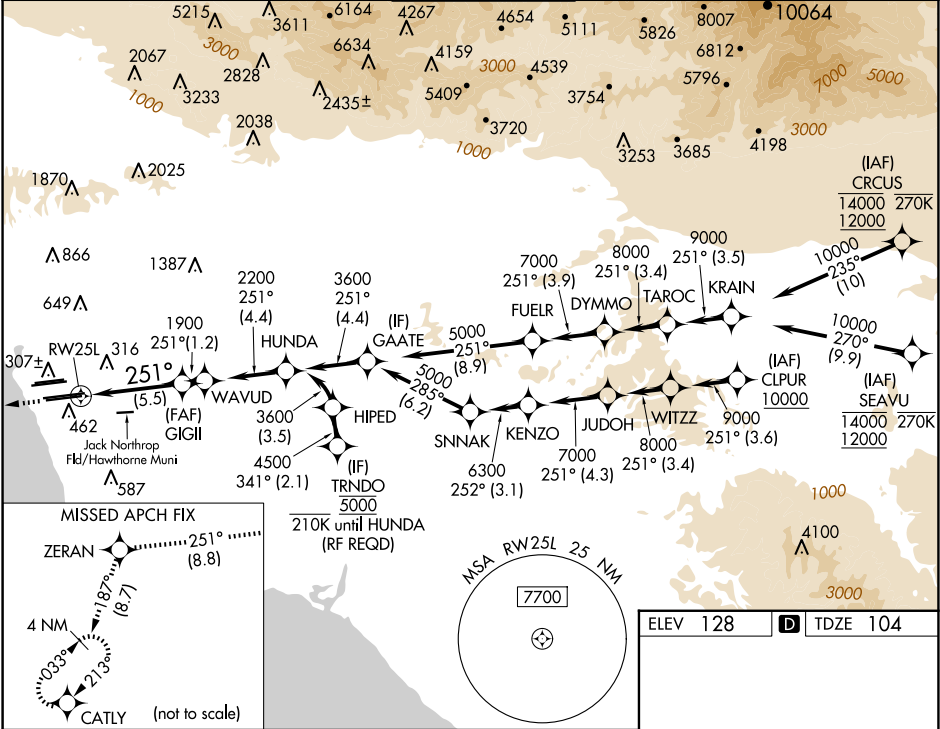
|         |          |       |
|---------|----------|-------|
| APP CRS | Rwy Ldg  | 11095 |
| 251°    | TDZE     | 104   |
|         | Apt Elev | 128   |

RNAV (RNP) Z RWY 25L

LOS ANGELES INTL (LAX)

|   |        |  |
|---|--------|--|
| RNP AR APCH.  | ALSF-2 | MISSED APPROACH: Climb to 2000 on track 251° to ZERAN and on track 187° to CATLY and hold. |
| GPS required. For uncompensated Baro-VNAV systems, procedure NA below 5°C or above 54°C. Simultaneous approach authorized. Simultaneous approach authorized with HHR. |        |  |

|            |               |                   |                |          |       |
|------------|---------------|-------------------|----------------|----------|-------|
| D-ATIS     | SOCAL APP CON | LOS ANGELES TOWER | GND CON        | CLNC DEL | CPDLC |
| ARR 133.8  | 124.3 363.2   | N 133.9 239.3     | N 121.65 327.0 | 120.35   |       |
| DEP 135.65 | 124.5 235.975 | S 120.95 379.1    | S 121.75 327.0 | 327.0    |       |
|            | (225°-044°)   | (090°-224°)       | W 121.4 327.0  |          |       |
|            |               | (045°-089°)       |                |          |       |



|   |                     |         |       |  |
|---|---------------------|---------|-------|--|
| 2000                                    | ZERAN               | tr 187° | CATLY | VGSI and RNAV glidepath not coincident (VGSI Angle 3.00/TCH 70). |
| tr 251°                                 |                     |         |       |  |
| See planview for multiple IF locations. |                     |         |       |  |
|   |                     |         |       |  |
| CATEGORY                                | A                   | B       | C     | D  |
| RNP 0.15 DA                             | 445/30 341 (400-5%) |         |       |  |
| RNP 0.30 DA                             | 543/50 439 (500-1)  |         |       |  |
| AUTHORIZATION REQUIRED                  |                     |         |       |  |

