

APP CRS
251°

Rwy Ldg
TDZE
123

Apt Elev
128

RNAV (RNP) Z RWY 24L

LOS ANGELES INTL (LAX)

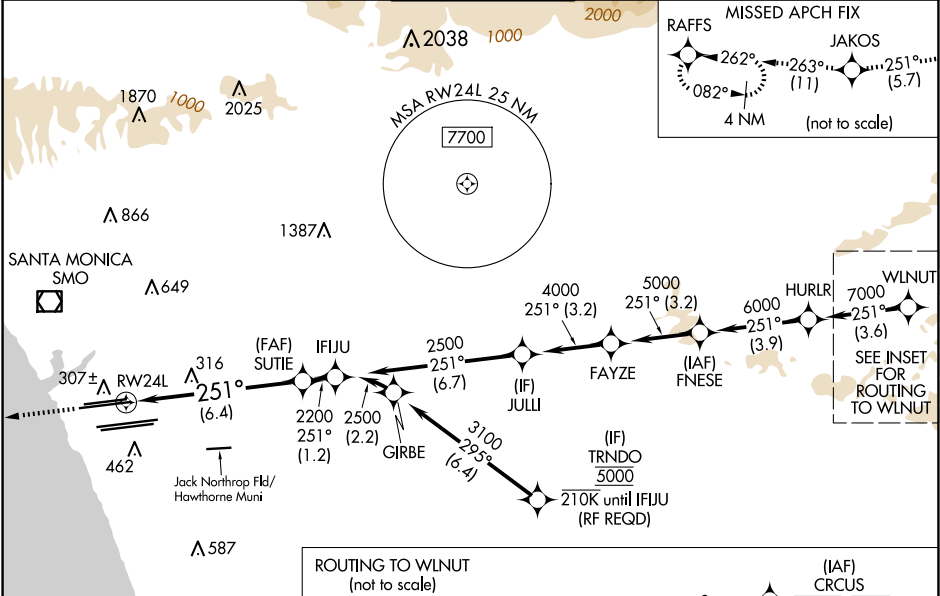
RNP AR APCH.

Simultaneous approach authorized. Simultaneous approach authorized with HHR.
For uncompensated Baro-VNAV systems, procedure NA below 5°C or above 54°C. For inop ALS, increase RNP 0.15 all Cats visibility to 1½ SM.

MALSR

MISSED APPROACH: Climb to 2000 on track 251° to JAKOS and track 263° to RAFFS and hold.

D-ATIS	SOCAL APP CON	LOS ANGELES TOWER	GND CON	CLNC DEL	CPDLC
ARR 133.8	124.3 363.2 (APCH FM WEST)	124.9 269.0 (090°-224°)	N 121.65 327.0	120.35	
DEP 135.65	124.5 235.975 (225°-044°)	128.5 360.7 (045°-089°)	S 121.75 327.0 W 121.4 327.0	327.0	



ELEV 128	D	TDZE 123
ROUTING TO WLNU (not to scale)		
WLNU	SALWA	PFILA
8000 251° (3.6)	9000 251° (3.6)	10000 240° (10.4)
		14000 270K 12000
		(IAF) CRCS
		10000 273° (10.8)
		14000 270K 12000
		(IAF) SEAVU

2000 JAKOS tr 251°

263° RAFFS

See planview for multiple IF locations.

SUTIE 2200

IFJU 2500

GP 3.00° TCH 59

VGSI and RNAV glidepath not coincident (VGSI Angle 3.00/TCH 79).

RWY 24L

CATEGORY	A	B	C	D
RNP 0.15 DA	545/35	422 (500-%)		
RNP 0.30 DA	592/45	469 (500-%)		

AUTHORIZATION REQUIRED