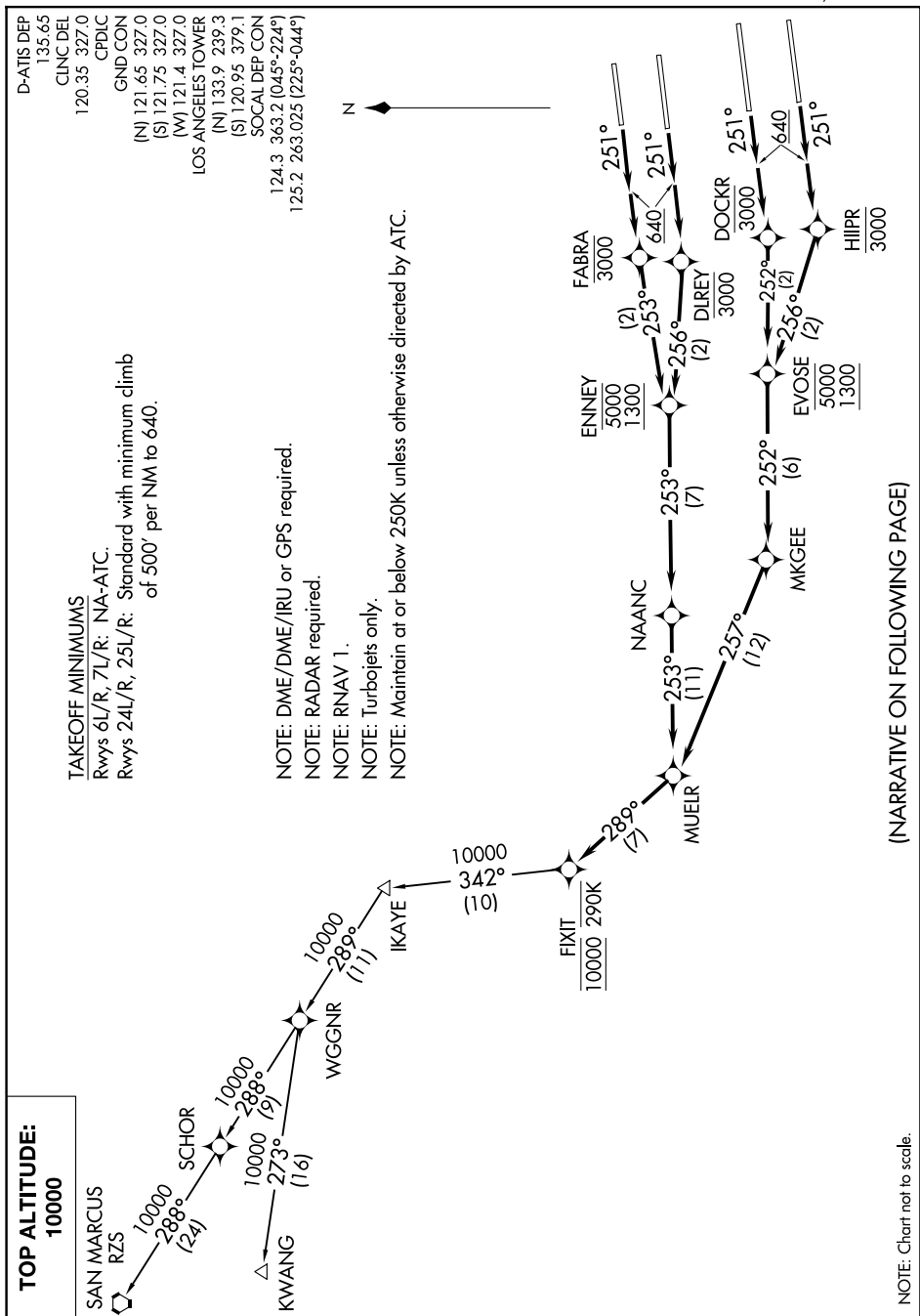


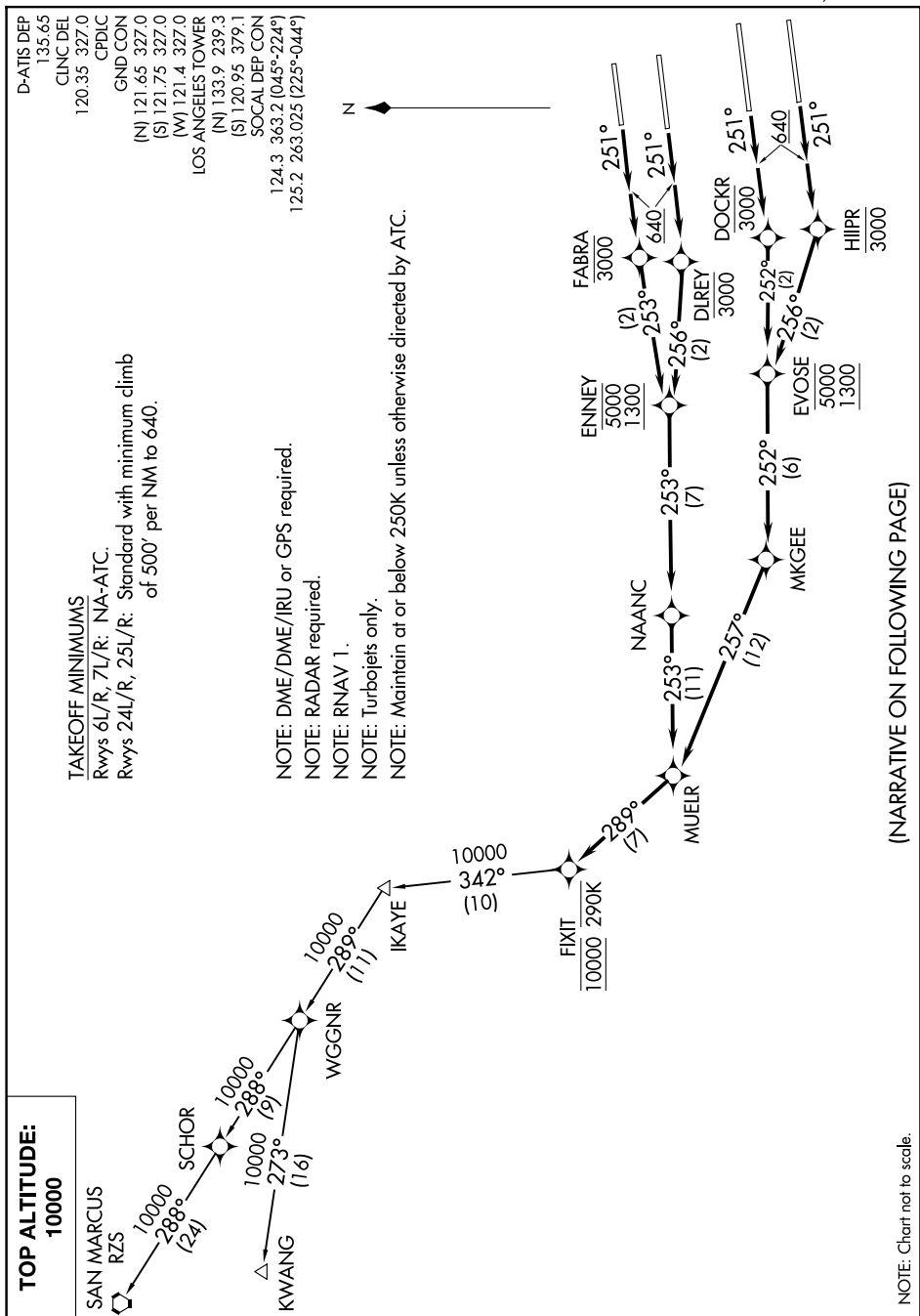
## MUELR FOUR DEPARTURE (RNAV)

AL-237 (FAA)

LOS ANGELES INTL (LAX)  
LOS ANGELES, CALIFORNIA

**TAKEOFF MINIMUMS**  
 Rwys 6L/R, 7L/R: NA-ATC.  
 Rwys 24L/R, 25L/R: Standard with minimum climb  
 of 500' per NM to 640.

NOTE: DME/DME/IRU or GPS required.  
NOTE: RADAR required.  
NOTE: RNAV 1.  
NOTE: Turbojets only.  
NOTE: Maintain at or below 250K unless otherwise directed by ATC.



(NARRATIVE ON FOLLOWING PAGE)

SW-3, 07 AUG 2025 to 04 SEP 2025

NOTE: Chart not to scale.

## MUELR FOUR DEPARTURE (RNAV)

(MUELR4.FIXIT) 17AUG17

LOS ANGELES, CALIFORNIA  
LOS ANGELES INTL (LAX)