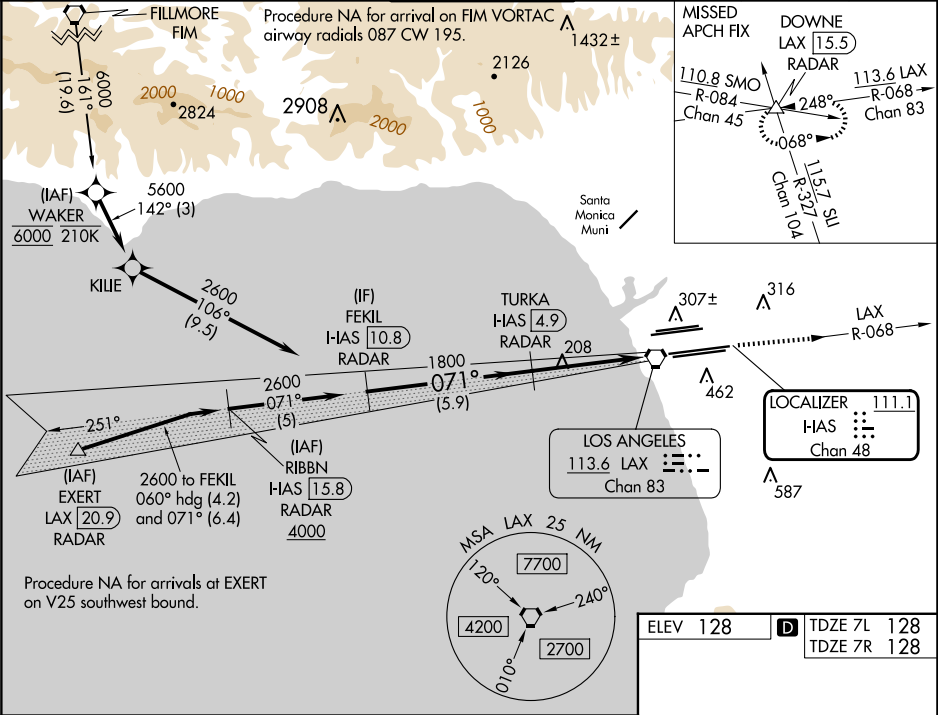


LOC/DME I- IAS 111.1 Chan 48	APP CRS 071°	Rwy Ldg 11259 11095	
		TDZE 128 128	
		Apt Elev 128 128	

ILS or LOC RWY 7L
LOS ANGELES INTL (LAX)

From FIM VORTAC: RNAV 1-GPS required. DME or RADAR required.		MALSR Rwy 7L	MALSR Rwy 7R	MISSED APPROACH: Climb to 3000 on LAX VORTAC R-068 to DOWNE INT/LAX 15.5 DME/RADAR and hold.
Simultaneous approach authorized. Autopilot coupled approach NA below 925. Inop table does not apply to Sidestep Rwy 7R Cats A and B.				

D-ATIS ARR 133.8 DEP 135.65	SOCAL APP CON 124.3 363.2 (APCH FM WEST) 124.5 235.975 (225°-044°)	124.9 269.0 (090°-224°) 128.5 360.7 (045°-089°)	LOS ANGELES TOWER N 133.9 239.3 S 120.95 379.1	GND CON N 121.65 327.0 S 121.75 327.0 W 121.4 327.0	CLNC DEL 120.35 327.0	CPDLC
---	--	--	--	---	---------------------------------	-------



		VGSI and ILS glidepath not coincident (VGSI Angle 3.00/TCH 83).		3000	DOWNE
2600		TURKA I-ILS 4.9 RADAR		LAX R-068	
GS 3.00° TCH 59		1800		I-ILS DME ANTENNA	
		* I-ILS 0.8		* LOC only	
		I-ILS 0.2			
5.9 NM		4.1 NM		1 NM	
CATEGORY	A	B	C	D	
S-ILS 7L	336/18		208 (300-½)		
S-LOC 7L	520/24 392 (400-½)		520/35 392 (400-⅔)		
SIDESTEP 7R	520/55 392 (400-1)			520-1½ 392 (400-1½)	

TDZ/CL Rwy 6R, 7L, 24R, and 25L HIRL all Rwy					
FAF to MAP 5.1 NM					
Knots	60	90	120	150	180
Min:Sec	5:06	3:24	2:33	2:02	1:42