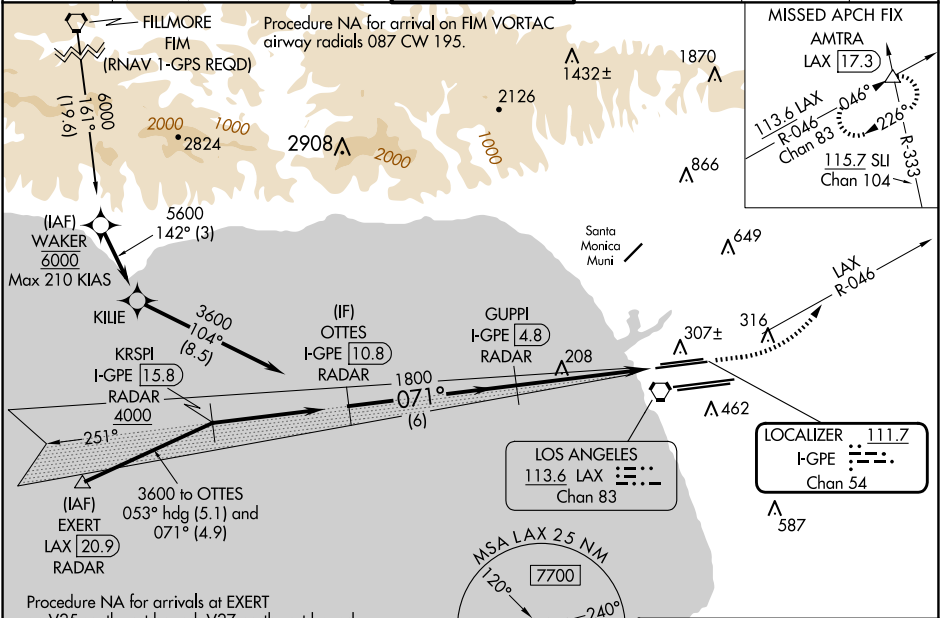


LOC/DME I-GPE 111.7 Chan 54	APP CRS 071°	Rwy Ldg 6R 9748 8566 TDZE 116 119 Apt Elev 128 128
---	------------------------	--

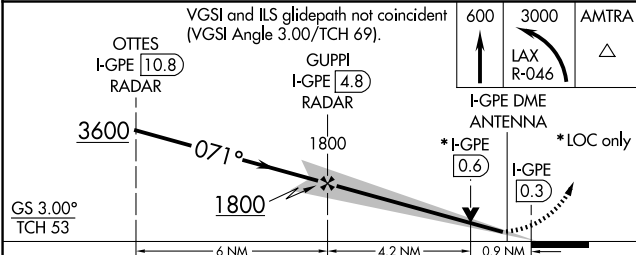
ILS or LOC RWY 6R
LOS ANGELES INTL (LAX)

▼ Simultaneous approach authorized. For inop ALS, increase S-LOC 6R Cat C/D visibility to RVR 5500. Inop table does not apply to Sidestep 6L Cats A and B. # RVR 1800 authorized with use of FD or AP or HUD to DA.	MALSR Rwy 6R 	MALSR Rwy 6L 	MISSED APPROACH: Climb to 600 then climbing left turn to 3000 on LAX VORTAC R-046 to AMTRA INT/ LAX 17.3 DME and hold.
---	------------------	------------------	--

D-ATIS ARR 133.8 DEP 135.65	SOCAL APP CON 124.3 363.2 124.9 269.0 (ARCFM WEST) 124.5 235.975 128.5 360.7 (225°-044°) (090°-224°) (045°-089°)	LOS ANGELES TOWER N 133.9 239.3 S 120.95 379.1	GND CON N 121.65 327.0 S 121.75 327.0 W 121.4 327.0	CLNC DEL 120.35 327.0	CPDLC
---	--	--	---	---------------------------------	-------

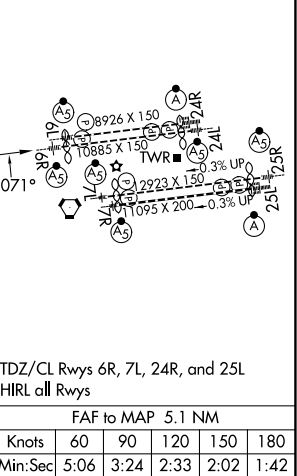


DME or RADAR REQUIRED



CATEGORY	A	B	C	D
S-ILS 6R#	316/24 200 (200-1/2)			
S-LOC 6R	460/24 344 (400-1/2)		460/30 344 (400-5/8)	
SIDESTEP 6L	460/55 341 (400-1)			460-1 1/2 341 (400-1 1/2)

ELEV 128	TDZE 6R 116	TDZE 6L 119
----------	-------------	-------------



SW-3, 07 AUG 2025 to 04 SEP 2025

SW-3, 07 AUG 2025 to 04 SEP 2025