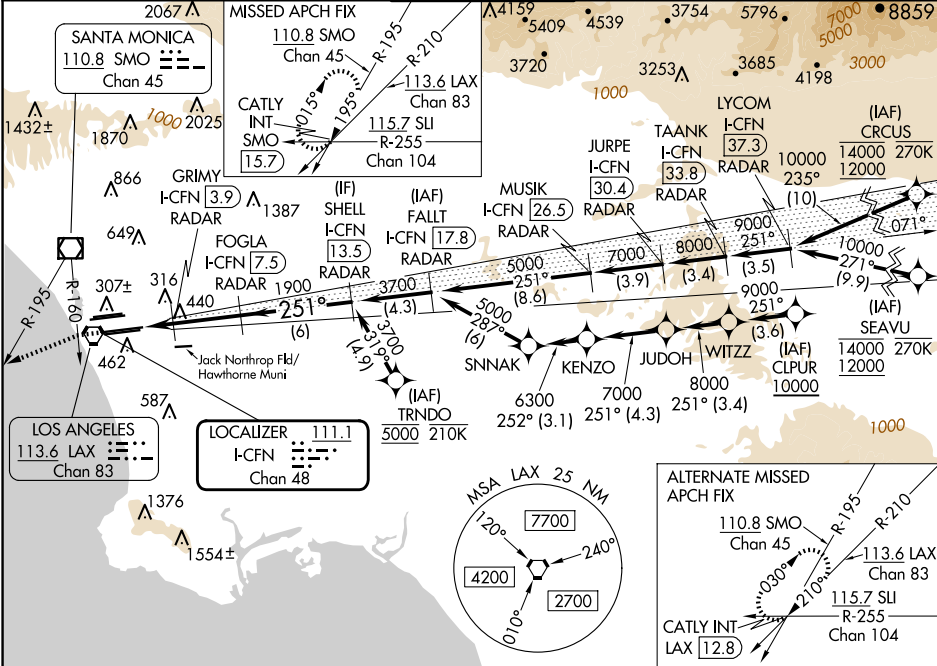


LOC/DME I-FCN 111.1 Chan 48	APP CRS 251°	Rwy Ldg	25R	25L
		TDZE	113.4	110.95
		Apt Elev	104	104
			128	128

ILS or LOC RWY 25R
LOS ANGELES INTL (LAX)

From CRCUS, SEAVU, TRNDO, CLPUR: RNAV 1-GPS required. DME or RADAR required.	MALSR Rwy 25R	ALSF-2 Rwy 25L	MISSED APPROACH: Climb to 2000 on heading 251° until crossing SMO R-160 then left turn on heading 236° and SMO VOR/DME R-195 to CATLY INT/SMO 15.7 DME and hold.
Simultaneous approach authorized. Simultaneous approach authorized with HHR. For inop ALS increase Sidestep 25L Cat C visibility to 1½ SM. #RVR 1800 authorized with use of FD or AP or HUD to DA.			

D-ATIS ARR 133.8 DEP 135.65	SOCAL APP CON 124.3 363.2 (225°-044°)	124.9 269.0 (090°-224°)	LOS ANGELES TOWER N 133.9 239.3 S 120.95 379.1	GND CON N 121.65 327.0 S 121.75 327.0 W 121.4 327.0	CLNC DEL 120.35 327.0	CPDLC
---	--	-----------------------------------	--	---	---	-------



2000 hdg 251°	SMO R-160 hdg 236°	SMO R-195	CATLY INT	VGSI and ILS glidepath not coincident (VGSI Angle 3.00/TCH 75).		SHELL I-CFN 13.5 RADAR	FOGLA I-CFN 7.5 RADAR	GRIMY I-CFN 3.9 RADAR	I-CFN 2.1	1900	3700	740*	1.9 NM	3.6 NM	6 NM	GS 3.00° TCH 54
*LOC only																
CATEGORY	A		B		C		D									
S-ILS 25R#	304/24 200 (200-½)															
S-LOC 25R	700/24 596 (600-½)								700-1¼ 596 (600-1¼)							
SIDESTEP 25L	700/55 596 (600-1)								700-1¼ 596 (600-1¼)				700-1½ 596 (600-1½)			

ELEV 128	TDZE 25R 104	TDZE 25L 104
TDZ/CL Rwy 6R, 7L, 24R, and 25L HIRL all Rwy		
FAF to MAP 5.5 NM		
Knots	60	90 120 150 180
Min:Sec	5:30	3:40 2:45 2:12 1:50

SW-3, 07 AUG 2025 to 04 SEP 2025

SW-3, 07 AUG 2025 to 04 SEP 2025