

LOC/DME I-OSS 108.5 Chan 22	APP CRS 251°	Rwy Ldg 8926 TDZE 122 Apt Elev 128
---	------------------------	---

ILS RWY 24R (CAT II & III)
LOS ANGELES INTL (LAX)

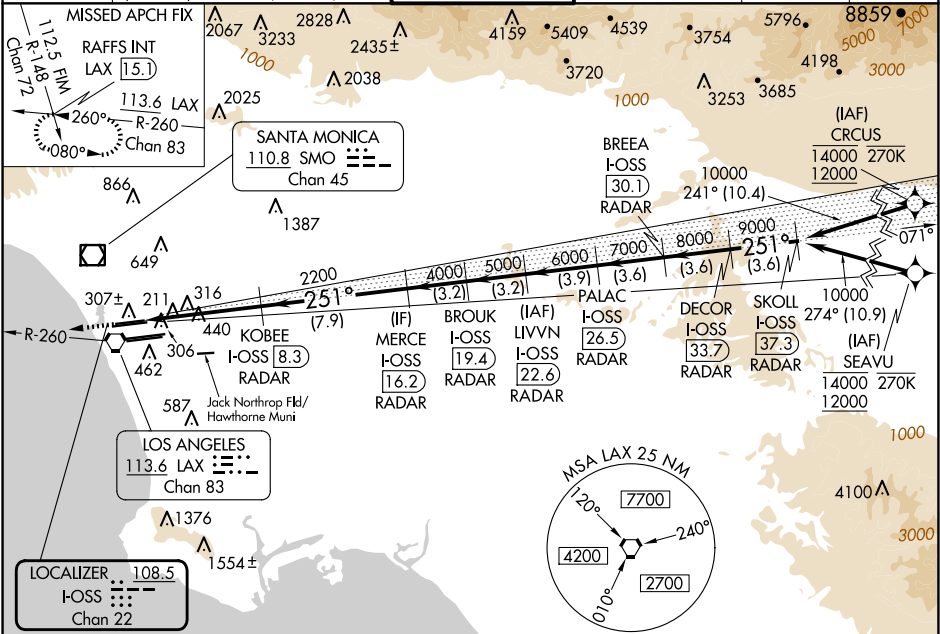
From CRUCS, SEAVU: RNAV 1-GPS required. DME or RADAR required.

Simultaneous approach authorized with HHR.
Simultaneous approach authorized.

ALSF-2

MISSED APPROACH: Climb to 2000 on heading 251° and LAX VORTAC R-260 to RAFFS INT/LAX 15.1 DME and hold.

D-ATIS ARR 133.8 DEP 135.65	SOCAL APP CON 124.3 363.2 (APCH FM WEST) 124.5 235.975 (225°-044°)	LOS ANGELES TOWER N 133.9 239.3 S 120.95 379.1 (090°-224°) (045°-089°)	GND CON N 121.65 327.0 S 121.75 327.0 W 121.4 327.0	CLNC DEL 120.35 327.0	CPDLC
---	--	--	---	---	-------



ELEV 128 TDZE 122

Diagram details: 2000, 2200, 2400, 2600, 2800, 3000, 3200, 3400, 3600, 3800, 4000, 4200, 4400, 4600, 4800, 5000, 5200, 5400, 5600, 5800, 6000, 6200, 6400, 6600, 6800, 7000, 7200, 7400, 7600, 7800, 8000, 8200, 8400, 8600, 8800, 9000, 9200, 9400, 9600, 9800, 10000. Distances: 1.0, 1.5, 2.0, 2.5, 3.0, 3.5, 4.0, 4.5, 5.0, 5.5, 6.0, 6.5, 7.0, 7.5, 8.0, 8.5, 9.0, 9.5, 10.0, 10.5, 11.0, 11.5, 12.0, 12.5, 13.0, 13.5, 14.0, 14.5, 15.0, 15.5, 16.0, 16.5, 17.0, 17.5, 18.0, 18.5, 19.0, 19.5, 20.0, 20.5, 21.0, 21.5, 22.0, 22.5, 23.0, 23.5, 24.0, 24.5, 25.0, 25.5, 26.0, 26.5, 27.0, 27.5, 28.0, 28.5, 29.0, 29.5, 30.0, 30.5, 31.0, 31.5, 32.0, 32.5, 33.0, 33.5, 34.0, 34.5, 35.0, 35.5, 36.0, 36.5, 37.0, 37.5, 38.0, 38.5, 39.0, 39.5, 40.0, 40.5, 41.0, 41.5, 42.0, 42.5, 43.0, 43.5, 44.0, 44.5, 45.0, 45.5, 46.0, 46.5, 47.0, 47.5, 48.0, 48.5, 49.0, 49.5, 50.0, 50.5, 51.0, 51.5, 52.0, 52.5, 53.0, 53.5, 54.0, 54.5, 55.0, 55.5, 56.0, 56.5, 57.0, 57.5, 58.0, 58.5, 59.0, 59.5, 60.0, 60.5, 61.0, 61.5, 62.0, 62.5, 63.0, 63.5, 64.0, 64.5, 65.0, 65.5, 66.0, 66.5, 67.0, 67.5, 68.0, 68.5, 69.0, 69.5, 70.0, 70.5, 71.0, 71.5, 72.0, 72.5, 73.0, 73.5, 74.0, 74.5, 75.0, 75.5, 76.0, 76.5, 77.0, 77.5, 78.0, 78.5, 79.0, 79.5, 80.0, 80.5, 81.0, 81.5, 82.0, 82.5, 83.0, 83.5, 84.0, 84.5, 85.0, 85.5, 86.0, 86.5, 87.0, 87.5, 88.0, 88.5, 89.0, 89.5, 90.0, 90.5, 91.0, 91.5, 92.0, 92.5, 93.0, 93.5, 94.0, 94.5, 95.0, 95.5, 96.0, 96.5, 97.0, 97.5, 98.0, 98.5, 99.0, 99.5, 100.0. Frequencies: 113.6 LAX, 108.5 LOCALIZER, 124.3 363.2, 124.5 235.975, 133.8 ARR, 135.65 DEP, 120.35 CLNC DEL, 121.65 N, 121.75 S, 121.4 W, 133.9 N, 120.95 S, 139.1 S, 121.65 N, 121.75 S, 121.4 W, 120.35 CLNC DEL, 121.65 N, 121.75 S, 121.4 W, 120.35 CLNC DEL.

VGSI and ILS glidepath not coincident (VGSI Angle 3.00/TCH 73).

DECOR I-OSS (33.7) RADAR, SKOLL I-OSS (37.3) RADAR, BREA I-OSS (30.1) RADAR, PALAC I-OSS (26.5) RADAR, BROOK I-OSS (19.4) RADAR, MERCE I-OSS (16.2) RADAR, KOBEE I-OSS (8.3) RADAR, 2200, 4000, 5000, 6000, 7000, 8000, 9000, 10000, GS 3.00° TCH 55.

CATEGORY	A	B	C	D
S-ILS 24R	CAT II RA 118/12 100 DA 222			
S-ILS 24R	CAT III RVR 06			

CATEGORY II & III ILS - SPECIAL AIRCREW & AIRCRAFT CERTIFICATION REQUIRED

SW-3, 07 AUG 2025 to 04 SEP 2025

SW-3, 07 AUG 2025 to 04 SEP 2025