

APP CRS  
121°

Rwy Ldg  
TDZE  
Apt Elev

8650  
53  
60

RNAV (RNP) RWY 12

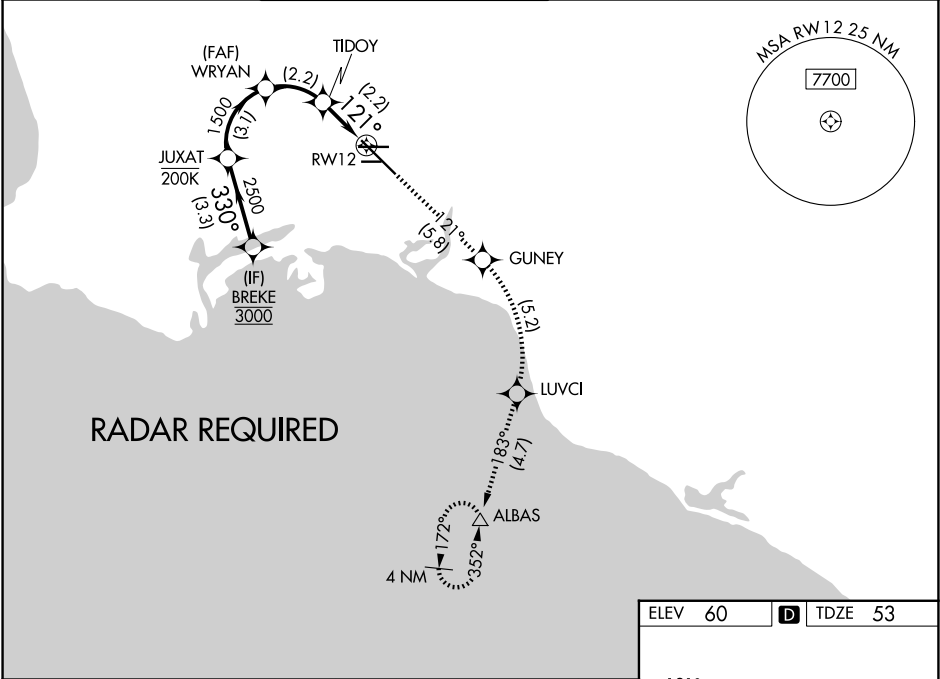
LONG BEACH (DAUGHERTY FLD) (LGB)

⚠

For uncompensated Baro-VNAV systems, procedure NA below 4°C (40°F) or above 54°C (130°F).  
RF required. GPS required.

MISSED APPROACH: Climb to 3000 on track 121° to GUNEY, right turn to LUVCI, and on track 183° to ALBAS and hold.

ATIS 127.75	SOCAL APP CON 125.35 316.125	LONG BEACH TOWER★ 120.5 257.6 (12) 119.4 (CTAF) 0 257.6 (30)	GND CON 133.0 257.6	CLNC DEL 118.15	UNICOM 122.95
----------------	---------------------------------	--	------------------------	--------------------	------------------



BREKE

3000

330°

JUXAT

2500

1500

WRYAN

1500

TID0Y

794

RW12

121°

GP 3.00°  
TCH 47

3.3 NM

3.1 NM

2.2 NM

2.2 NM

3000

GUNEY

LUVCI

tr 183°

ALBAS

tr 121°

VGSI and RNAV glidepath not coincident  
(VGSI Angle 3.00/TCH 70).

CATEGORY	A	B	C	D
RNP 0.15 DA	414-1¼	361 (400-1¼)		
RNP 0.30 DA	485-1½	432 (500-1½)		

ELEV 60

TDZE 53

121°

0.4% DOWN

6192 X 150

0.3% UP

26R

3218 X 100

0.5% UP

26L

0.3% UP

26R

TWR

TDZ/CL Rwy 30

HIRL Rwy 12-30

HIRL Rwy 8R-26L

MIRL Rwy 8L-26R

REIL Rwys 8R, 12, 26L, and 26R

AUTHORIZATION REQUIRED