

ATIS
127.75
CLINC DB
118.15
GND CC
133.0 2
LONG B
119.4 2
120.5 2
SOCAL I
125.35
127.2 2

FR|TR THREE DEPARTURE (RNAV)

(FRITR3.DOTSS) 13SEP18

LONG BEACH, CALIFORNIA
LONG BEACH (DAUGHERTY FLD) (LGB)



DEPARTURE ROUTE DESCRIPTION

TAKEOFF RUNWAY 12: Climb heading 121° to 600, then on heading 121° or as assigned by ATC for vectors to cross FRITR at or above 5000, then on track 076° to DOTSS, thence. . . .

TAKEOFF RUNWAY 26R: Climb heading 256° to 580, then on heading 180° or as assigned by ATC for vectors to cross FRITR at or above 5000, then on track 076° to DOTSS, thence. . . .

TAKEOFF RUNWAY 30: Climb heading 301° to 1500, then left turn heading 180° or as assigned by ATC for vectors to cross FRITR at or above 5000, then on track 076° to DOTSS, thence. . . .

... on (transition). Maintain 17000. Expect higher altitude 10 minutes after departure.

AVRRY TRANSITION (FRITR3.AVRRY)

C-NERY TRANSITION (FRITR3 C-NERY)

TCATE TRANSITION (FRITR3.TCATE)

TOP ALTITUDE:
17000

TAKEOFF MINIMUMS

Rwys 8L/R, 26L: NA-ATC.

Rwys 12, 30: Standard.

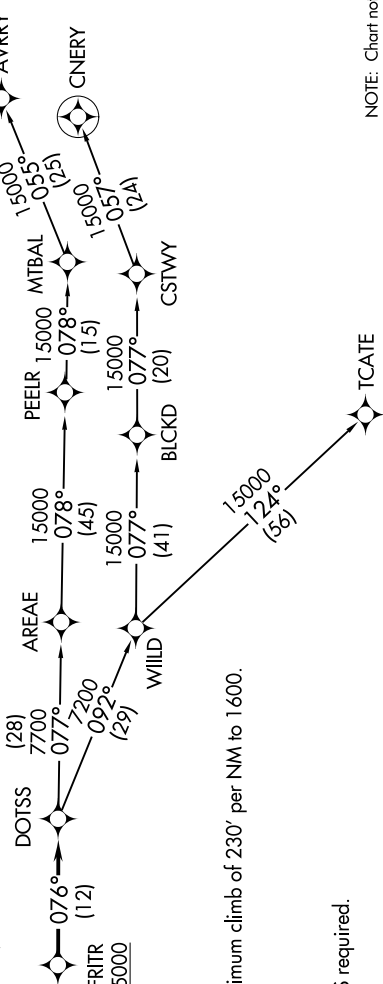
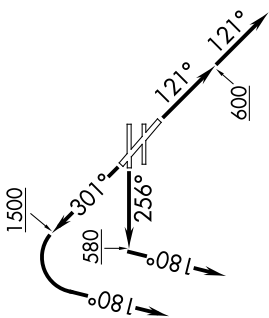
Rwy 26R: Standard with

NOTE: RADAR required.

NOTE: RNAV 1.

NOTE: DME/DME/IRU or GPS required.

NOTE: Turbojet aircraft only.



SW-3, 07 AUG 2025 to 04 SEP 2025