

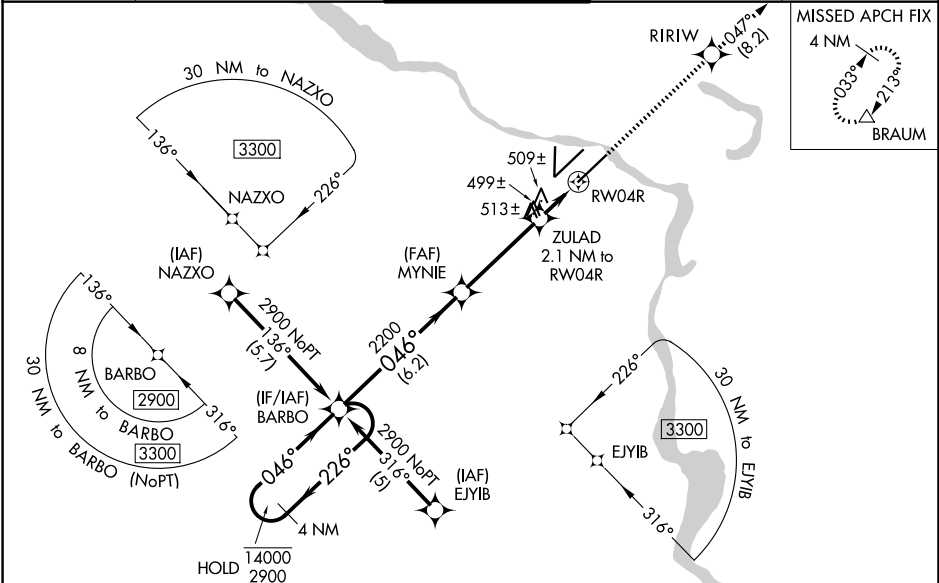
WAAS CH <b>70611</b> <b>W04B</b>	APP CRS <b>046°</b>	Rwy Ldg <b>7200</b> TDZE <b>260</b> Apt Elev <b>266</b>
--	------------------------	---

RNAV (GPS) RWY 4R

BILL AND HILLARY CLINTON NTL/ADAMS FLD (LIT)

RNP APCH-GPS.	MALSR	MISSED APPROACH: Climb to 2900 direct RIRIW and on track 047° to BRAUM and hold.
<div><div></div><div>Rwy 4R helicopter visibility reduction below RVR 4000 NA. For uncompensated Baro-VNAV systems, LNAV/VNAV NA below -15°C or above 54°C. Simultaneous approach authorized. LNAV procedure NA during simultaneous operations. Use of FD or AP required during simultaneous operations. For inop ALS, increase LPV all Cts visibility to RVR 4500, LNAV/VNAV all Cts visibility to 1½ SM and LNAV Cat A/B visibility to RVR 5500 and Cat C/D to 1½ SM.</div></div>		

D-ATIS <b>125.65</b>	LITTLE ROCK APP CON <b>135.4 353.6</b>	ADAMS TOWER <b>118.7 257.8</b>	GND CON <b>121.9 339.8</b>	CLNC DEL <b>118.95</b>
-------------------------	---	-----------------------------------	-------------------------------	---------------------------



ELEV 266		D	TDZE 260		
4 NM Holding Pattern BARBO		2900	RIRIW	tr 047°	BRAUM
14000 2900		GP 3.00° TCH 49			
← 226°		046° →			
2200		960			
6.2 NM		3.7 NM		0.7 NM	
1.4 NM					
CATEGORY	A	B	C	D	
LPV DA	574/40		314 (400-¾)		
LNAV/VNAV DA	756/50		496 (500-1)		
LNAV MDA	760/40 500 (500-¾)		760/50 500 (500-1)		
CIRCLING	820-1 554 (600-1)	1000-1 734 (800-1)	1180-2¾ 914 (1000-2¾)	1180-3 914 (1000-3)	

Diagram illustrating the approach path and holding pattern. The path starts at BARBO (4 NM Holding Pattern) and proceeds through MYNIE (2200 ft) and ZULAD (960 ft) to RW04R. The path is defined by a 046° heading. The diagram also shows the 2200 ft and 960 ft altitudes, and the 6.2 NM, 3.7 NM, 0.7 NM, and 1.4 NM distances. The diagram includes symbols for RIRIW (Radar Identification and Reporting) and BRAUM (Brake Release Area).