

| | | |
|--|------------------------|---|
| WAAS CH 42811 W22A | APP CRS 227° | Rwy Ldg TDZE 260 Apt Elev 266 |
|--|------------------------|---|

RNAV (GPS) RWY 22L

BILL AND HILLARY CLINTON NTL/ADAMS FLD (LIT)

RNP APCH.

For uncompensated Baro-VNAV systems, LNAV/VNAV NA below -15°C or above 48°C.
▼ Rwy 22L helicopter visibility reduction below ¾ SM NA. Inop table does not apply to LPV, LNAV/VNAV or LNAV Cat C and D. For inop ALS, increase LNAV Cat A and B visibility to RVR 5000. Simultaneous approach authorized. LNAV procedure NA during simultaneous operations. Use of FD or AP required during simultaneous operations.

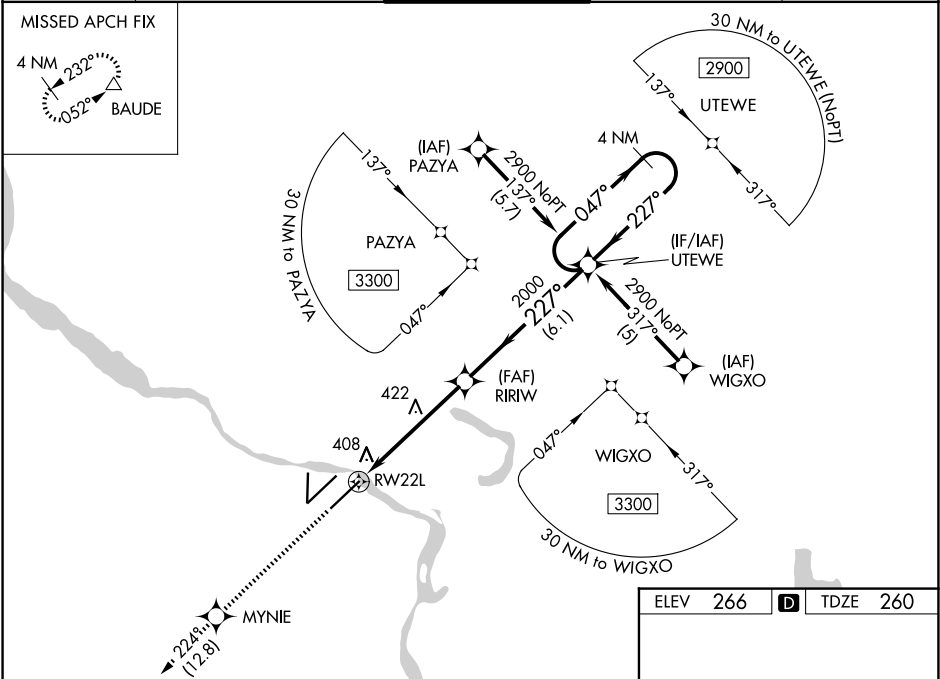
MALSF

MALSF

MISSED APPROACH:

Climb to 2900 direct MYNIE and on track 224° to BAUDE and hold.

| | | | | |
|-------------------------|---|-----------------------------------|-------------------------------|---------------------------|
| D-ATIS 125.65 | LITTLE ROCK APP CON 135.4 353.6 | ADAMS TOWER 118.7 257.8 | GND CON 121.9 339.8 | CLNC DEL 118.95 |
|-------------------------|---|-----------------------------------|-------------------------------|---------------------------|



2900

MYNIE

tr 224°

BAUDE

*LNAV only.

RIRIW 2000

UTEWE 4 NM Holding Pattern

227° 047° 2900

GP 3.00° TCH 50

1.2 NM 4 NM 6.1 NM

| CATEGORY | A | B | C | D |
|--------------|----------------------|-----------------------|--------------------------|------------------------|
| LPV DA | | 543/50 | 283 (300-1) | |
| LNAV/VNAV DA | | 774-1¾ | 514 (600-1¾) | |
| LNAV MDA | 680/40 | 420 (500-¾) | 680/60 | 420 (500-1¼) |
| CIRCLING | 820-1 554 (600-1) | 1000-1 734 (800-1) | 1180-2¾ 914 (1000-2¾) | 1180-3 914 (1000-3) |

ELEV 266

TDZE 260

MIRL Rwy 18-36
HIRL Rwys 4R-22L and 4L-22R
TDZ/CL Rwy 22R

RNAV (GPS) RWY 22L

SC-1, 07 AUG 2025 to 04 SEP 2025

SC-1, 07 AUG 2025 to 04 SEP 2025