

LOC/DME I-CNL	APP CRS	Rwy Ldg
<b>111.3</b>	<b>047°</b>	<b>7200</b>
Chan 50		TDZE <b>260</b>
		Apt Elev <b>266</b>

ILS or LOC RWY 4R

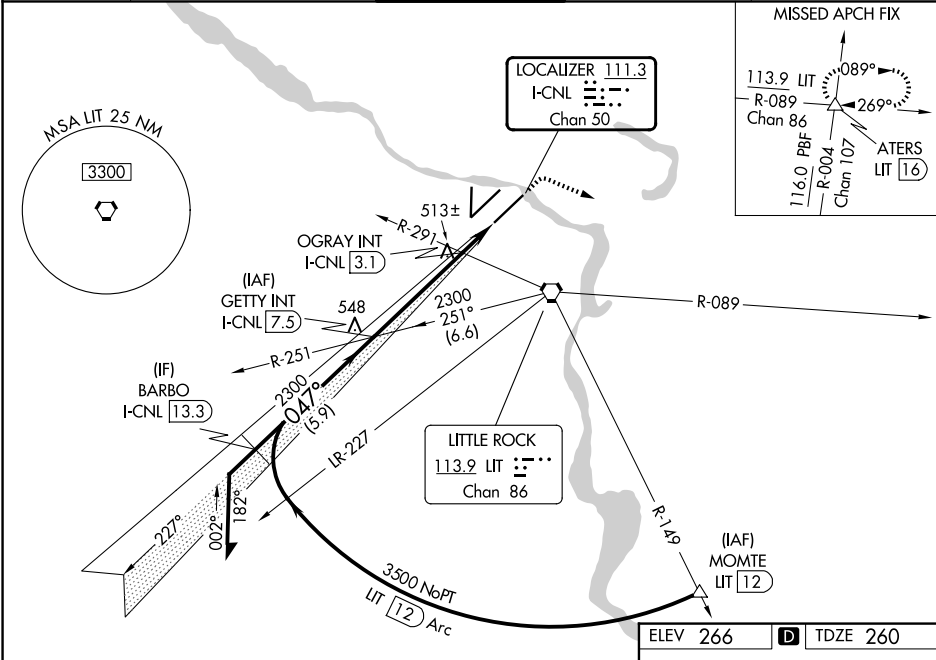
BILL AND HILLARY CLINTON NTL/ADAMS FLD (LIT)

▼ Rwy 4R helicopter visibility reduction below RVR 4000 NA. Simultaneous approach authorized. For inop ALS, increase S-ILS 4R all Cats visibility to RVR 4500. For inop ALS, increase S-LOC 4R Cats A/B visibility to RVR 5500 and Cats C/D visibility to 1 1/4 SM. OGRAY Fix Minimums: For inop ALS, increase S-LOC 4R Cats A/B visibility to RVR 5500 and Cats C/D to 1 1/2 SM.

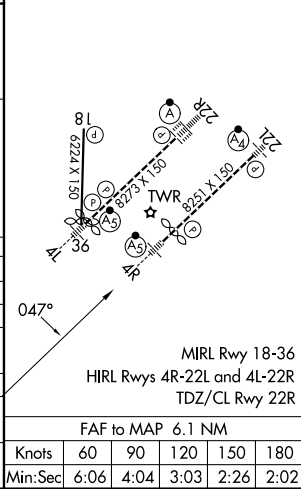
MALSR

MISSED APPROACH: Climb to 800 then climbing right turn to 4000 on heading 110° and LIT VORTAC R-089 to ATERS INT/UIT 16 DME and hold.

D-ATIS	LITTLE ROCK APP CON	ADAMS TOWER	GND CON	CLNC DEL
<b>125.65</b>	<b>135.4 353.6</b>	<b>118.7 257.8</b>	<b>121.9 339.8</b>	<b>118.95</b>



Remain within 10 NM	GETTY INT I-CNL 7.5	800	4000	LIT R-089	ATERS
			hdg 110°		△
2300	227°	2300			
GS 3.00° TCH 49	047°	OGRAY INT I-CNL 3.1	I-CNL 1.3		
Use I-CNL DME when on the localizer course.		880			
		4.4 NM	1.8 NM		
CATEGORY	A	B	C	D	
S-ILS 4R		523/40	263 (300-3/4)		
S-LOC 4R		880/40 620 (700-3/4)	880-1 3/8 620 (700-1 1/2)		
CIRCLING		880-1 614 (700-1)	1000-1 734 (800-1)	1180-2 3/4 914 (1000-2 3/4)	1180-3 914 (1000-3)
OGRAY (DUAL VOR RECEIVERS OR DME REQUIRED)					
S-LOC 4R		780/40 520 (600-3/4)	780/55 520 (600-1)		
CIRCLING		820-1 554 (600-1)	1000-1 734 (800-1)	1180-2 3/4 914 (1000-2 3/4)	1180-3 914 (1000-3)



SC-1, 07 AUG 2025 to 04 SEP 2025

SC-1, 07 AUG 2025 to 04 SEP 2025