

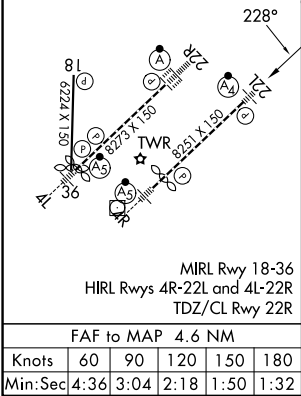
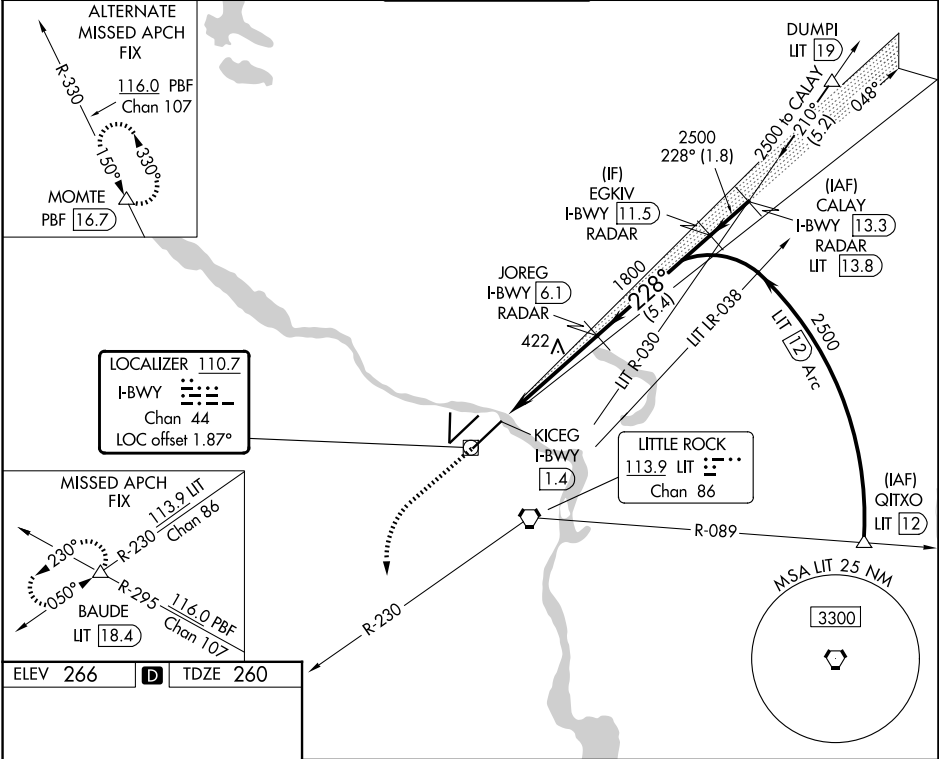
LOC/DME I-BWY	APP CRS	Rwy Ldg	7200
<b>110.7</b>	<b>228°</b>	TDZE	<b>260</b>
Chan <b>44</b>		Apt Elev	<b>266</b>

ILS or LOC RWY 22L

BILL AND HILLARY CLINTON NTL/ADAMS FLD (LIT)

DME or RADAR required.		MALSF	MISSED APPROACH: Climb to 800 then climbing left turn to 3000 on heading 170° and LIT VORTAC R-230 to BAUDE INT/LIT 18.4 DME and hold.
Simultaneous approach authorized.			

D-ATIS	LITTLE ROCK APP CON	ADAMS TOWER	GND CON	CLNC DEL
<b>125.65</b>	<b>135.4 353.6</b>	<b>118.7 257.8</b>	<b>121.9 339.8</b>	<b>118.95</b>



800

↑

3000

hdg

170°

LIT

R-230

BAUDE

△

\*LOC only.

JOREG

I-BWY

6.1

RADAR

EGKIV

I-BWY

11.5

RADAR

CALAY

I-BWY

13.3

RADAR

KICEG

I-BWY

1.4

\*I-BWY

2.4

1800

228°

2500

228°

2500

GS 3.00°

TCH 51

1 NM

3.6 NM

5.4 NM

1.8 NM

CATEGORY	A	B	C	D
S-ILS 22L		510/40	250 (300-¾)	
S-LOC 22L		640/40	380 (400-¾)	
CIRCLING	820-1 554 (600-1)	1000-1 734 (800-1)	1180-2¾ 914 (1000-2¾)	1180-3 914 (1000-3)