

WAAS CH <b>56214</b> <b>W36A</b>	APP CRS <b>357°</b>	Rwy Ldg <b>12901</b> TDZE <b>1175</b> Apt Elev <b>1219</b>
--	------------------------	--

RNAV (GPS) RWY 36

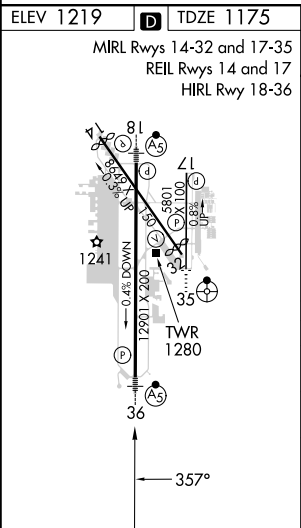
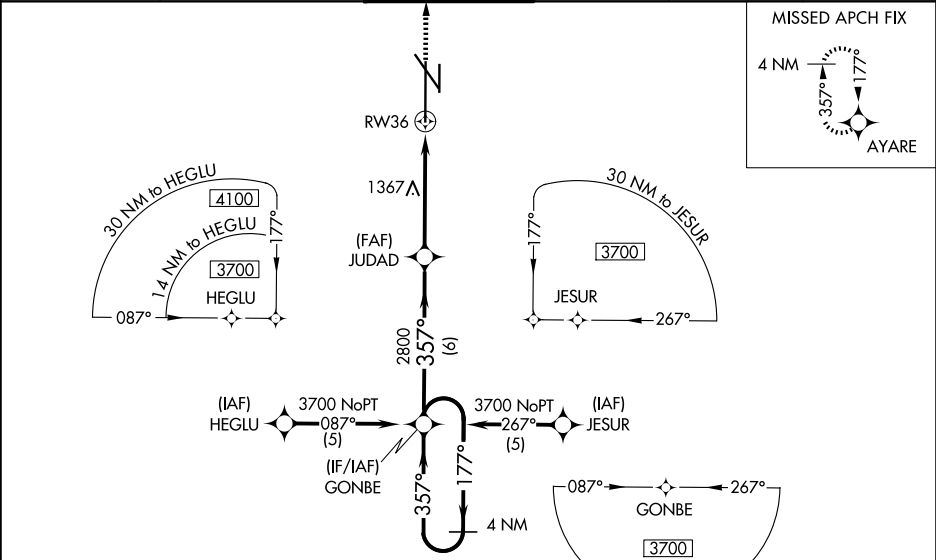
LINCOLN (LNK)

⚠ For uncompensated Baro-VNAV systems, LNAV/VNAV NA below -17°C (2°F) or above 54°C (130°F). DME/DME RNP-0.3 NA. When local altimeter setting not received, use Beatrice altimeter setting and increase all DA 91 feet, all MDA 100 feet and LNAV/VNAV all Cats, LNAV Cat C and D, and Circling Cats C and D visibility ¼ mile and LPV all Cats visibility ½ mile. For inop MALSR increase LPV all Cats visibility to 1 mile. For inop MALSR when using Beatrice altimeter setting increase LPV all Cats visibility to 1½ mile. Baro-VNAV and VDP NA when using Beatrice altimeter setting.

MALSR

MISSED APPROACH:  
Climb to 3800 direct  
AYARE and hold.

ATIS <b>118.05 290.9</b>	OMAHA APP CON <b>124.0 270.3</b>	LINCOLN TOWER ★ <b>118.5 (CTAF) 253.5</b>	GND CON <b>121.9 275.8</b>	CLNC DEL <b>120.7 225.4</b>	UNICOM <b>122.95</b>
-----------------------------	-------------------------------------	--	-------------------------------	--------------------------------	-------------------------



<div>4 NM Holding Pattern</div> <div>GONBE</div> <div>3700 ← 177° 357° →</div> <div>GP 3.00° TCH 56</div>				<div>30 NM to GONBE (NoPT)</div> <div>JUDAD</div> <div>2800</div> <div>*1.2 NM to RW36</div> <div>RW36</div> <div>*LNAV only</div>				<div>3800</div> <div>AYARE</div>	
<div>6 NM</div>				<div>3.7 NM</div>		<div>1.2 NM</div>			
CATEGORY		A		B		C		D	
LPV DA				1493/24		318 (300-½)			
LNAV/VNAV DA				1669/60		494 (500-1¼)			
LNAV MDA		1620/24		445 (500-½)		1620/40 445 (500-¾)		1620/50 445 (500-1)	
CIRCLING		1720-1 501 (600-1)		1760-1 541 (600-1)		1820-1¾ 601 (700-1¾)		1960-2½ 741 (800-2½)	