

WAAS CH 69328 W32A	APP CRS 322°	Rwy Ldg 7816 TDZE 1192 Apt Elev 1219
--	------------------------	---

RNAV (GPS) RWY 32
LINCOLN (LNK)

LINCOLN (LNK)

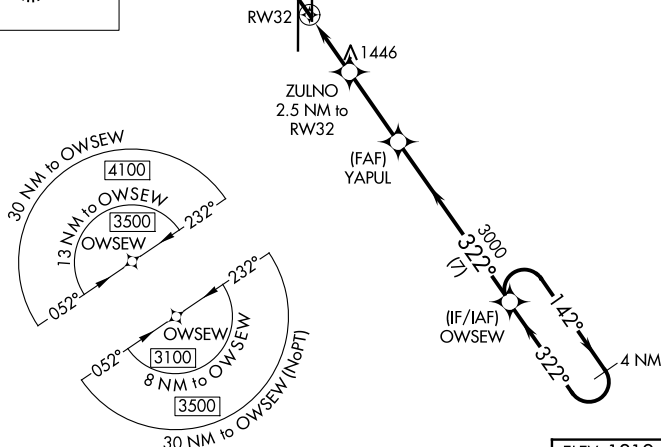
RNP APCH - GPS.

▼ For uncompensated Baro-VNAV systems, LNAV/VNAV NA below -25°C (-13°F) or above 54°C (130°F). When local altimeter setting not received, use Barotrace altimeter setting and increase all DA 91 feet and all MDA 100 feet, increase LPV all Cats visibility ½ mile, increase LNAV/VNAV all Cats visibility ¾ mile, increase LNAV Cats C/D and Circling Cats C/D visibility ¼ mile. Helicopter visibility reduction below ¾ SM NA. Baro-VNAV and VDP NA when using Barotrace altimeter setting.

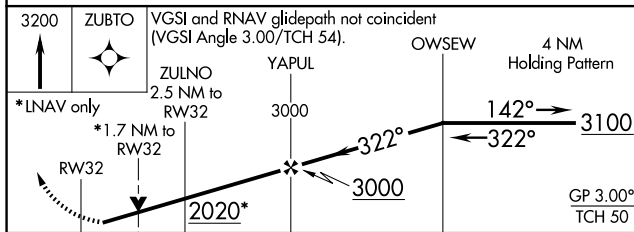
MISSED APPROACH:
Climb to 3200 direct
ZUBTO and hold.

ATIS 118.05 290.9	OMAHA APP CON 124.0 270.3	LINCOLN TOWER* 118.5(CTAF) 253.5	GND CON 121.9 275.8	CLNC DEL 120.7 225.4	UNICOM 122.95
----------------------	------------------------------	-------------------------------------	------------------------	-------------------------	------------------

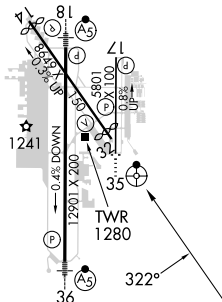
MISSED APCH FIX



ELEV 1219	D	TDZE 1192
-----------	----------	-----------



CATEGORY		A	B	C	D
LPV	DA	1442-1 250 (300-1)			
LNAV/ VNAV	DA	1576-1¼ 384 (400-1¼)			
LNAV	MDA	1760-1 568 (600-1)	1760-1¾ 568 (600-1¾)		
CIRCLING		1760-1 541 (600-1)	1820-1¾ 601 (700-1¾)	1960-2½ 741 (800-2½)	



HIRL Rwy 18-36
REIL Rwy 14 and 17
MIRL Rwy 14-32 and 17-35

RNAV (GPS) RWY 32