

LOC I-OCZ	APP CRS	Rwy Ldg	12901
111.1	177°	TDZE	1195
		Apt Elev	1219

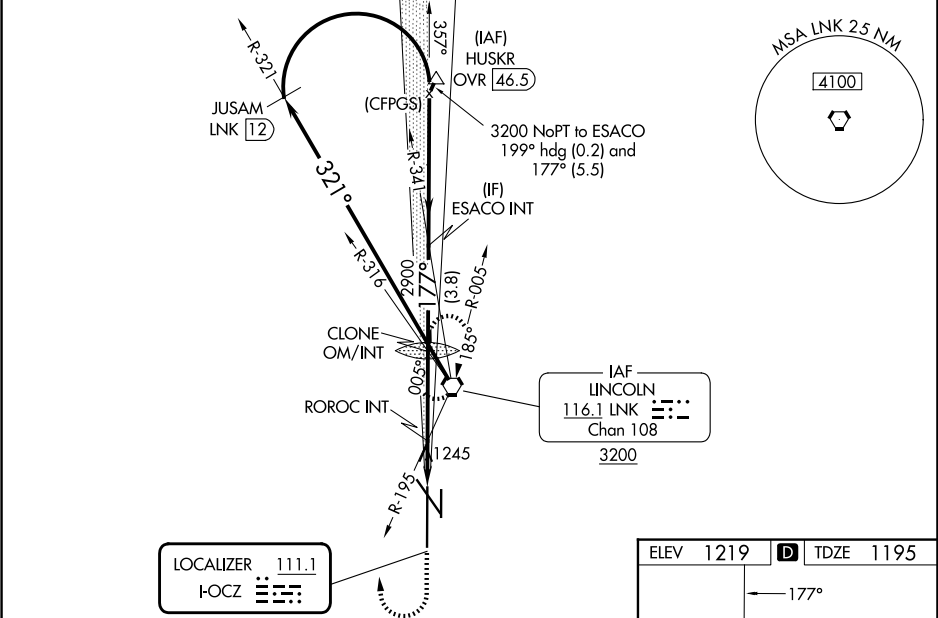
ILS Y or LOC Y RWY 18
LINCOLN (LNK)




When local altimeter setting not received use Beatrice altimeter setting and increase DA to 1486; and all MDA 100 feet, increase visibility S-LOC 18 Cat C, D, E and Circling Cats C and D ¼ SM; increase ROROC fix minimums S-LOC 18 Cat C/D/E visibility ⅓ SM and Circling Cats C and D ¼ SM. For inop ALS, increase S-ILS 18 Cat E visibility to RVR 4000, S-LOC 18 Cat E visibility to 1¾ SM, and ROROC fix minimums S-LOC 18 Cat E visibility to 1½ SM. For inop ALS when using Beatrice altimeter setting, increase S-ILS 18 all Cats visibility to RVR 4500, S-LOC 18 Cat E visibility to 2 SM, and ROROC fix minimums S-LOC 18 Cat C/D/E visibility to 1¾ SM.
#RVR 1800 authorized with use of FD or AP or HUD to DA.

MALSR

MISSED APPROACH:
Climb to 1700 then
climbing right turn to
3000 direct LNK
VORTAC and hold.

ATIS	OMAHA APP CON	LINCOLN TOWER ★	GND CON	CLNC DEL	UNICOM
118.05 290.9	124.0 270.3	118.5 (CTAF) 253.5	121.9 275.8	120.7 225.4	122.95



1700	3000	LNK	LNK VORTAC			JUSAM LNK 12	Teardrop Right Turn
			3200	321°	CLONE OM/INT	ESACO INT	3200
*1880 when using Beatrice altimeter setting.			ROROC INT	2837	177°	3200	GS 3.00° TCH 55
			1780*	2900			
			1.7 NM	3.2 NM	3.8 NM		
CATEGORY	A	B	C	D	E		
S-ILS 18 #	1395/24 200 (200-½)						
S-LOC 18	1780/24 585 (600-½)		1780-1¼ 585 (600-1¼)				
CIRCLING	1780-1 561 (600-1)		1820-1¾ 601 (700-1¾)		1960-2½ 741 (800-2½)		2040-3 821 (900-3)
ROROC FIX MINIMUMS (DUAL VOR RECEIVERS REQUIRED)							
S-LOC 18	1720/24 525 (600-½)		1720/55 525 (600-1)				
CIRCLING	1720-1 501 (600-1)		1760-1 541 (600-1)		1820-1¾ 601 (700-1¾)		1960-2½ 741 (800-2½) 2040-3 821 (900-3)

