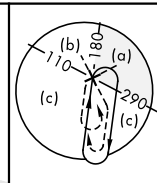
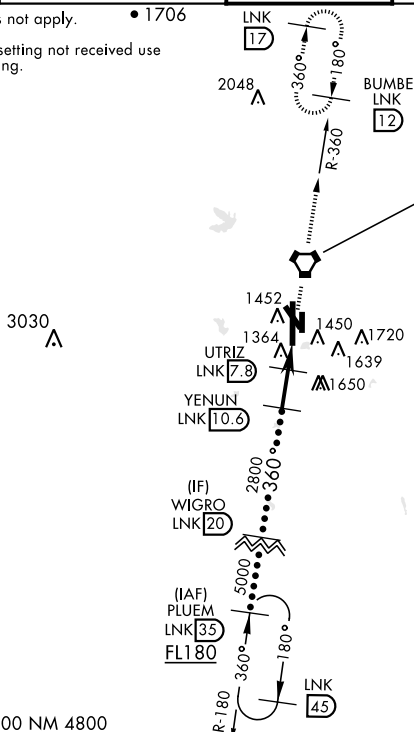


LINCOLN (KLNK)

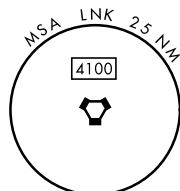
MISSED APPROACH: Climb to 3000 direct LNK VORTAC then via LNK R-360 to BUMBE 12 DME and hold.

CLNC DEL
120.7 225.4

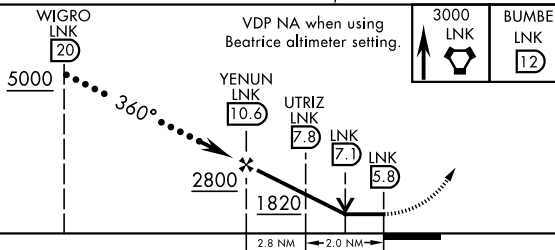
When local altimeter setting not received use
Beatrice altimeter setting.



LINCOLN
116.1 LNK 
Chan 108



EMERG SAFE ALT 100 NM 4800



LINCOLN (KLNK)

HI-VOR/DME or TACAN RWY 36