

[USAF]

LINCOLN (KLNK)

LOC I-LNK <u>109.9</u>	APCH CRS 357°	Rwy Idg 12,901 TDZE 1175 Arpt Elev 1219
----------------------------------	-------------------------	--------------------------------------------------------------------

DME required

T * When ALS inop, increase RVR to 40, vis to $\frac{3}{4}$ mile.
 ** When ALS inop, increase vis to $1\frac{3}{8}$ miles.
 *** When ALS inop, increase RVR to 45, vis to $\frac{7}{8}$ mile.

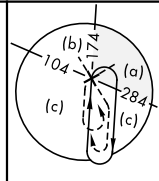
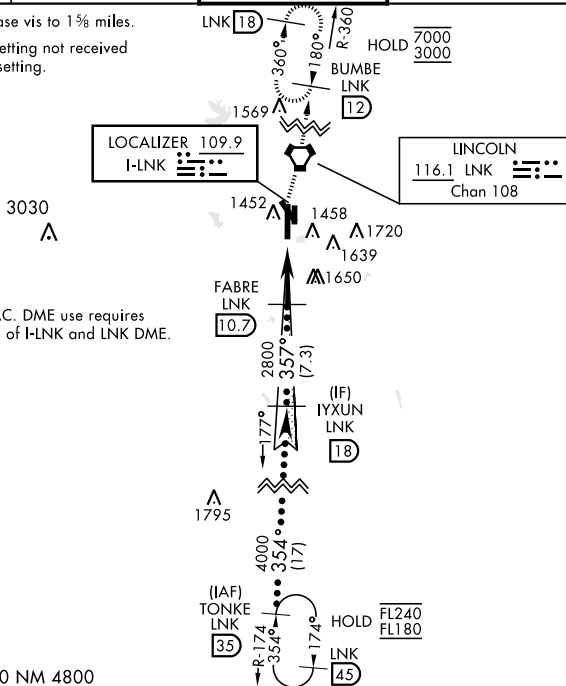


MISSED APPROACH: Climb to 1700 then climbing right turn to 3000 direct LNK VORTAC and on LNK R-360 to BUMBE 12 DME and hold.

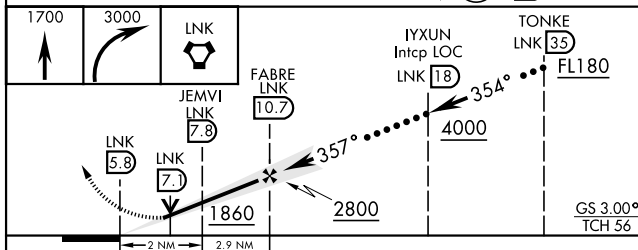
ATIS	OMAHA APP CON	TOWER ★	GND CON	CLNC DEL
118.05 290.9	124.0 270.3	118.5 253.5	121.9 275.8	120.7 225.4

† When ALS inop, increase vis to 1 5/8 miles.

When local altimeter setting not received
use Beatrice altimeter setting.

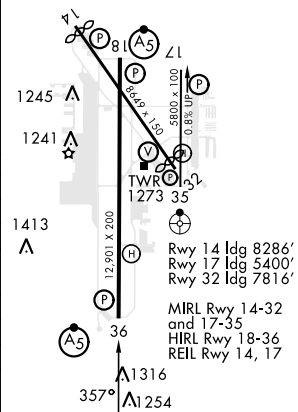


EMERG SAFE ALT 100 NM 4800



CATEGORY	C	D	E
S-ILS 36 *	1375/24	200	(200-½)
S-LOC 36 **	1620/45	445	(500-¾)
CIRCLING	1820-1½ 601 (700-1½)	1960-2¼ 741 (800-2¼)	2040-3 821 (900-3)
BEATRICE ALTIMETER SETTING			
S-ILS 36 ***	1466/24	291	(300-½)
S-LOC 36 †	1720/60	545	(600-1½)
CIRCLING	1920-2 601 (700-2)	2060-2¾ 741 (800-2¾)	2140-3¼ 921 (1000-3¼)

ELEV	1219	D	TDZE	1175
------	------	----------	------	------



40° 51'N-96° 46'W

LINCOLN (KLNK)

HI-ILS Z or LOC Z RWY 36