

WAAS CH <b>86700</b> <b>W08A</b>	APP CRS <b>079°</b>	Rwy Ldg <b>6100</b> TDZE <b>4129</b> Apt Elev <b>4170</b>
--	------------------------	---

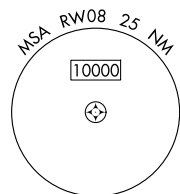
# RNAV (GPS) RWY 8

## LEWISTOWN MUNI (LWT)

**T** For uncompensated Baro-VNAV systems, LNAV/VNAV  
**A** NA below -26°C (-14°F) or above 50°C (123°F).  
DME/DME RNP- 0.3 NA.

**MISSED APPROACH:** Climb to 4600, then climbing right turn to 7700 direct CIWXU and hold, continue climb-in-hold to 7700.

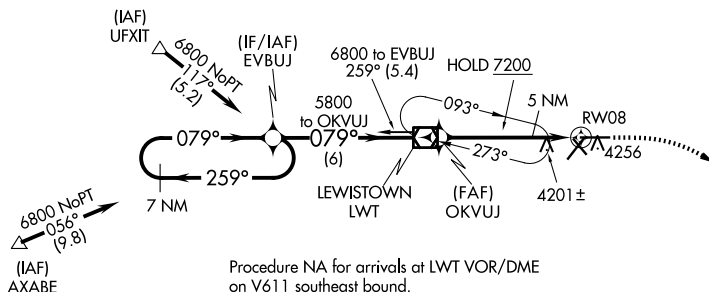
ASOS <b>118.375</b>	SALT LAKE CENTER <b>133.4 285.4</b>	UNICOM <b>123.0 (CTAF) 0</b>
------------------------	--	---------------------------------



A5852

6440

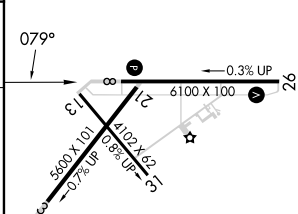
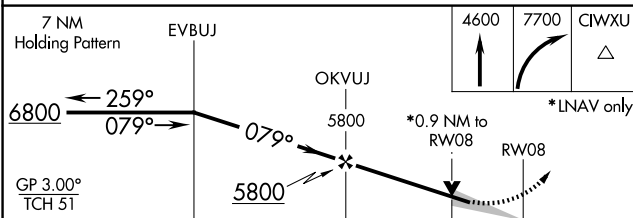
6127




Procedure NA for arrivals at LWT VOR/DME  
on V611 southeast bound.

• 5680

ELEV	4170	<b>D</b>	TDZE	4129
------	------	----------	------	------



CATEGORY		A	B	C	D
LPV	DA		4379- <sup>3</sup> / <sub>4</sub>	250 (300- <sup>3</sup> / <sub>4</sub> )	
LNAV/ VNAV	DA		4419- <sup>7</sup> / <sub>8</sub>	290 (300- <sup>7</sup> / <sub>8</sub> )	
LNAV	MDA		4460-1	331 (300-1)	
 CIRCLING		4680-1 510 (600-1)	4820-1 650 (700-1)	4980-2 <sup>1</sup> / <sub>4</sub> 810 (900-2 <sup>1</sup> / <sub>4</sub> )	5240-3 1070 (1100-3)

REIL Rwy 8 and 26 **L**  
MIRL 8-26 and 13-31 **L**