

VOR RWY 18

VOR/DME LAW 116.85 Chan 115 (Y)	APCH CRS 174°	Rwy Idg 5002 TDZE 1188 Arpt Elev 1188
---	-------------------------	--

[USA]

HENRY POST AAF (KFSI)

DME required

MISSED APPROACH: Climb straight ahead to 3000 direct to LAW VOR/DME and hold.

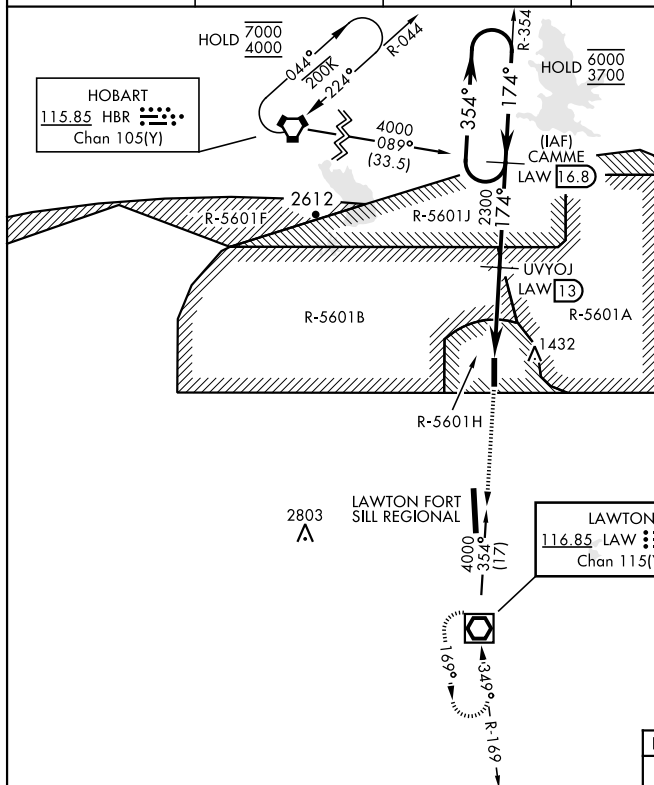
ATIS
135.425 354.025

120.55 322.4

CTAF
124.950

CLNC DEL
121.7 279.575

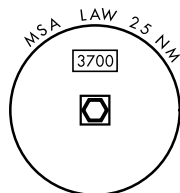
ASR





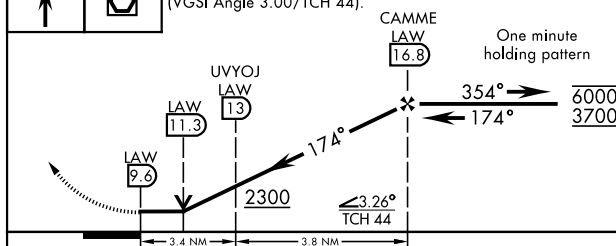
RADAR required for holding
above 6000, or speeds
greater than 175 KIAS.

Procedure not authorized for
arrival on HBR VORTAC airway
R-029 CW R-150 without holding
at HOBART. ATC clearance required.

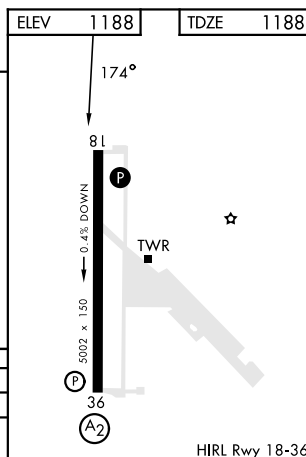
When local altimeter setting not received, use Lawton-Fort Sill RGNL altimeter setting.



3000 	LAW 	VGSI and descent angles not coincident (VGSI Angle 3.00/TCH 44).
---	--	--



CATEGORY	A		B		C		D	
S-18	1760/55	572	(600-1)		1760-1%	572	(600-1%)	
CIRCLING	1760-1	572	(600-1)		1820-1¼ 632 (700-1¼)		1920-2 ¼ 732 (800-2 ¼)	



HIRL Rwy 18-36

FORT SILL, OKLAHOMA

34° 39'N-98° 24'W

HENRY POST AAF (KFSI)

Amdt 3 31OCT24

VOR RWY 18

SC-1, 07 AUG 2025 to 04 SEP 2025

SC-1, 07 AUG 2025 to 04 SEP 2025