

FORT SILL, OKLAHOMA

RNAV (GPS) RWY 36

APCH CRS	Rwy Idg	5002
356°	TDZE	1187
	Arprt Elev	1188

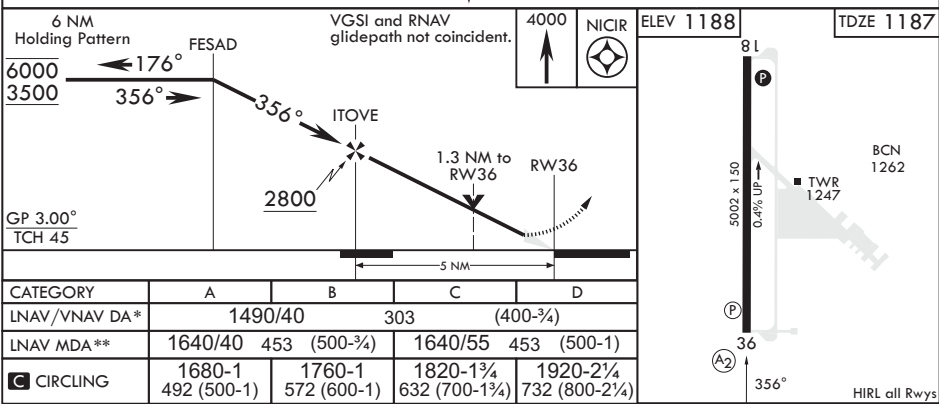
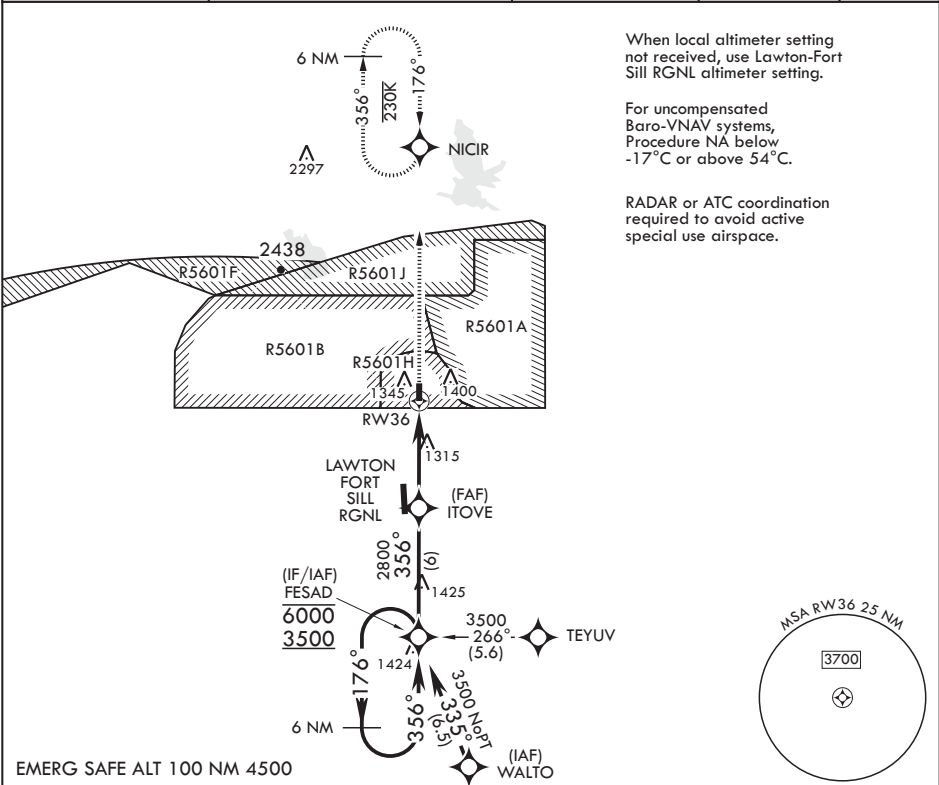
-(USA)

HENRY POST AAF (KFSI)

⚠ * When ALS inop, increase RVR to 45, vis to 7/8 mile.
** When ALS inop, increase CAT AB RVR to 55, vis to 1 mile; CAT CD vis to 1 3/8 miles.

SALS MISSED APPROACH: Climb to 4000 direct NICIR and hold. Radar required for MA to avoid active airspace.

ATIS 135.425 354.025	FORT SILL APP CON/DEP CON 120.55 322.4	CLNC DEL 121.7 279.575	CTAF 124.95	ASR
-------------------------	---	---------------------------	----------------	-----



FORT SILL, OKLAHOMA

34°39'N - 98°24'W

HENRY POST AAF (KFSI)

Amdt 3 30NOV23

RNAV (GPS) RWY 36

SC-1, 07 AUG 2025 to 04 SEP 2025

SC-1, 07 AUG 2025 to 04 SEP 2025