

| | | |
|--|------------------------|---|
| WAAS CH 99528 W36A | APP CRS 360° | Rwy Idg 5199 TDZE 428 Apt Elev 430 |
|--|------------------------|---|

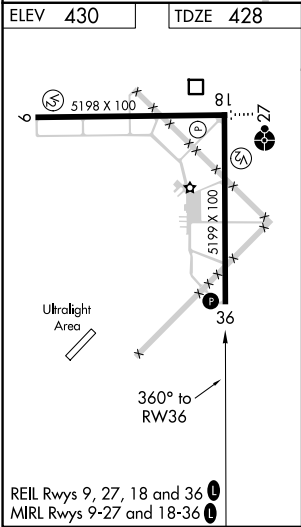
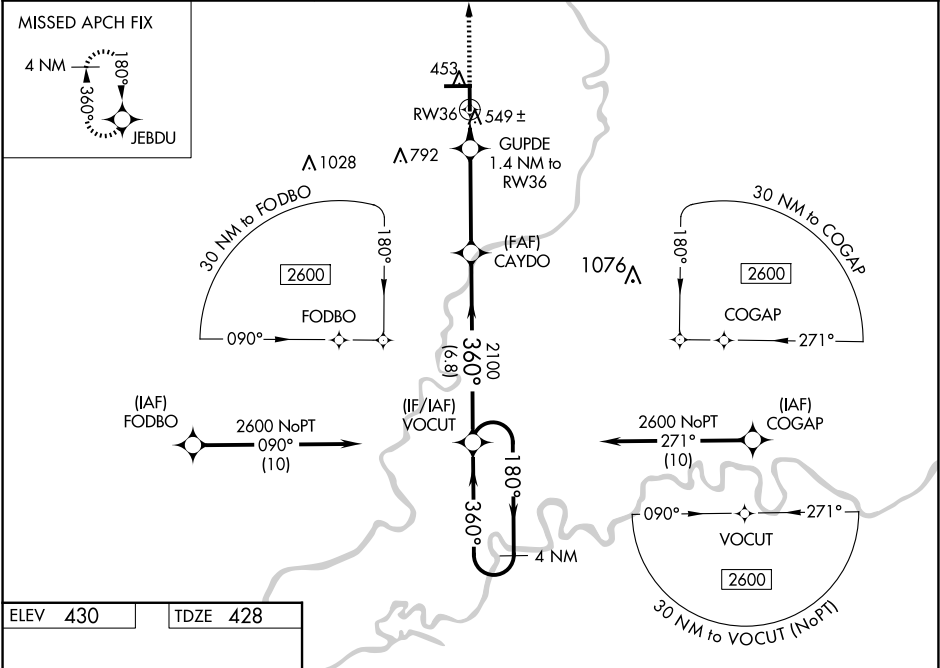
RNAV (GPS) RWY 36

LAWRENCEVILLE-VINCENNES INTL (L WV)

⚠ Baro-VNAV NA when using Mount Carmel altimeter setting. For uncompensated Baro-VNAV systems, LNAV/VNAV NA below -15°C (5°F) or above 41°C (105°F). Rwy 36 Straight-in and Circling minimums NA at night. DME/DME RNP-0.3 NA. Helicopter visibility reduction below 1 SM NA. When local altimeter setting not received, use Mount Carmel altimeter setting: increase LPV DA to 704 feet; increase LNAV/VNAV DA to 850 feet and all visibilities ½ SM; increase all MDAs 40 feet and LNAV visibility Cat C/D ½ SM and Circling visibility Cat D ¼ SM.

MISSED APPROACH:
Climb to 2600 direct JEBDU and hold.

| | | |
|----------------------|--|---------------------------------|
| ASOS 118.0 | EVANSVILLE APP CON ★ 125.6 343.7 | UNICOM 122.8 (CTAF) 0 |
|----------------------|--|---------------------------------|



2600 JEBDU

VOCUT

| | | | | |
|--------------|----------------------|----------------------|------------------------|-------------------------|
| CATEGORY | A | B | C | D |
| LPV DA | 678-1 250 (300-1) | | | |
| LNAV/VNAV DA | 824-1½ 396 (400-1½) | | | |
| LNAV MDA | 800-1 372 (400-1) | | | |
| CIRCLING | 880-1 450 (500-1) | 900-1 470 (500-1) | 940-1½ 510 (600-1½) | 1160-2¼ 730 (800-2¼) |