

WAAS	APP CRS	Rwy Idg	5198
CH 63028	271°	TDZE	430
W27A		Apt Elev	430

RNAV (GPS) RWY 27

LAWRENCEVILLE-VINCENNES INTL (L WV)

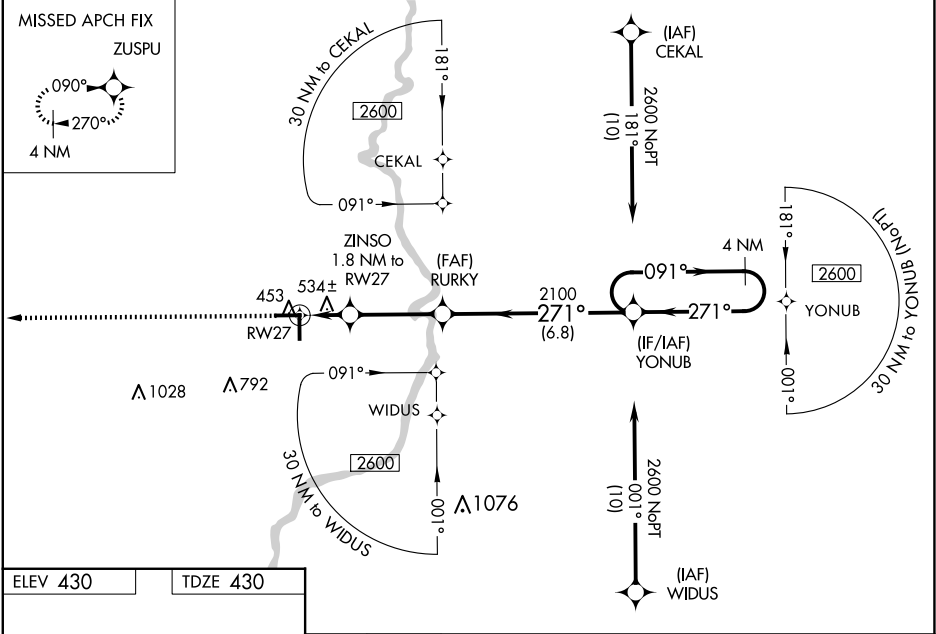
⚠ For uncompensated Baro-VNAV systems, LNAV/VNAV NA below -15°C (5°F) or above 41°C (105°F). DME/DME RNP-0.3 NA. Baro-VNAV and VDP NA when using Mount Carmel altimeter setting. When local altimeter setting not received, use Mount Carmel altimeter setting: increase LPV DA to 706 feet; increase LNAV/VNAV DA to 858 feet and all visibilities ½ SM; increase all MDAs 40 feet and Circling visibility Cat D ¼ SM. Inop table does not apply to LNAV Cat C. For inop ODALS increase LNAV/VNAV all Cats visibility to 1¾ miles. For inop ODALS when using Mount Carmel altimeter setting increase LPV all Cats visibility to ¾ mile, LNAV/VNAV all Cats visibility to 1½ miles and LNAV Cats C and D visibility to 1¾ miles. Circling to Rwy 36 NA at night.

ODALS

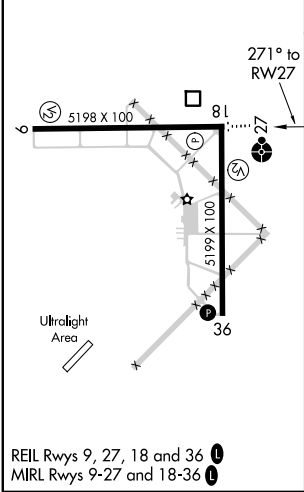
MISSED APPROACH:

Climb to 2600 direct ZUSPU and hold.

ASOS	EVANSVILLE APP CON ★	UNICOM
118.0	125.6 343.7	122.8 (CTAF) 1



ELEV 430	TDZE 430
----------	----------



2600	ZUSPU	VGSI and RNAV glidepath not coincident (VGSI Angle 3.00°/TCH 26).				4 NM Holding Pattern
*LNAV only.		ZINSO 1.8 NM to RW27	RURY	YONUB	2600	
*1.1 NM to RW27		2100		271°	091°	2600
RW27		*1040		2100	271°	GP 3.00° TCH 45
1.1 NM		0.7	3.3 NM	6.8 NM		
CATEGORY	A	B	C	D		
LPV DA	680-¾		250 (300-¾)			
LNAV/VNAV DA	832-1¼		402 (500-1¼)			
LNAV MDA	800-¾	370 (400-¾)	800-1	370 (400-1)		
CIRCLING	880-1 450 (500-1)	900-1 470 (500-1)	940-1½ 510 (600-1½)	1160-2¼ 730 (800-2¼)		