

WAAS CH 53528 W18A	APP CRS 180°	Rwy Idg 5199 TDZE 430 Apt Elev 430
--	------------------------	---

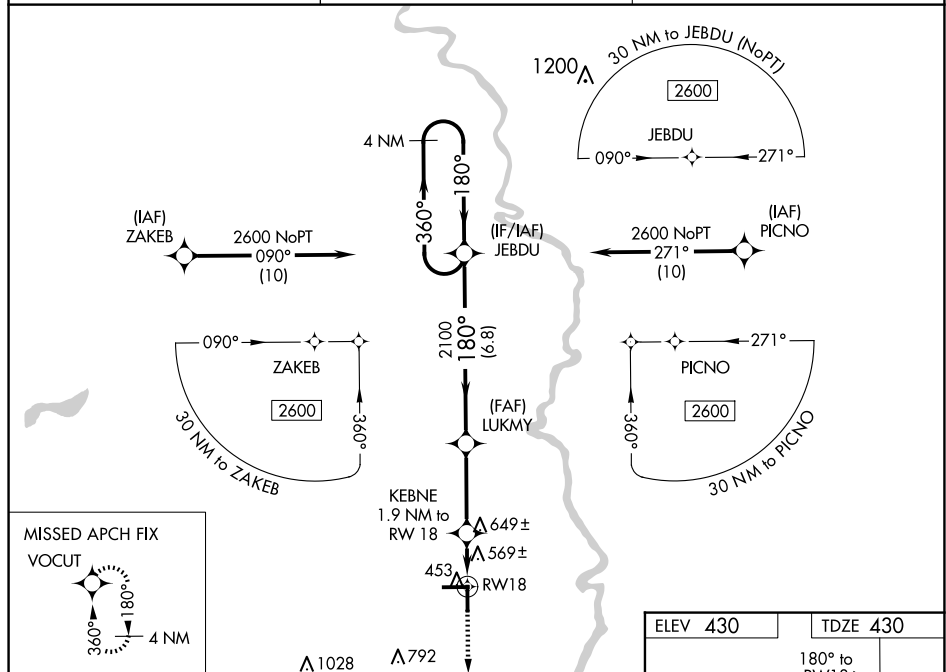
RNAV (GPS) RWY 18

LAWRENCEVILLE-VINCENNES INTL (LWV)

T For uncompensated Baro-VNAV systems, LNAV/VNAV NA below -15°C (5°F) or above 41°C (105°F).
A DME/DME RNP-0.3 NA. Baro-VNAV and VDP NA when using Mount Carmel altimeter setting. When local altimeter setting not received, use Mount Carmel altimeter setting: increase LPV DA 656 feet; increase LNAV/VNAV DA to 902 feet and all visibilities ½ SM; increase all MDAs 40 feet and LNAV visibility Cat C/D ¼ SM; and Circling visibility Cat D ¼ SM. Circling to Rwy 36 NA at night.

MISSED APPROACH:
Climb to 2600 direct
VOCUT and hold.

ASOS 118.0	EVANSVILLE APP CON ★ 125.6 343.7	UNICOM 122.8 (CTAF) 0
----------------------	--	---------------------------------



MISSED APCH FIX
VOCUT

4 NM Holding Pattern

2600 ← 360°
180° →

JEBDU

LUKMY 2100

KEBNE 1.9 NM to RW18

*1060

6.8 NM

3.2 NM

1.9 NM

GP 3.00°
TCH 45

VGSI and RNAV glidepath not coincident
(VGS Angle 3.00/TCH 25).

2600 ↑

VOCUT ✦

*LNAV only.

