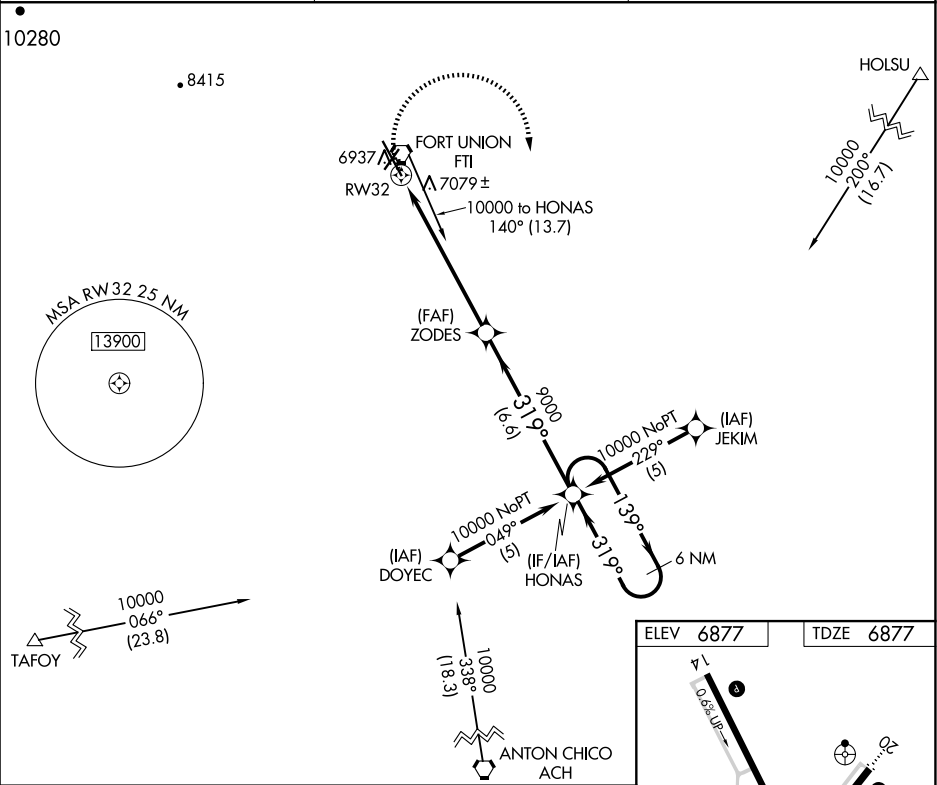


APP CRS	Rwy Ldg	8199
319°	TDZE	6877
	Apt Elev	6877

RNAV (GPS) RWY 32

LAS VEGAS MUNI (LVS)

RNP APCH-GPS.		MISSED APPROACH: Climbing right turn to 10000 direct HONAS and hold.
▼ When local altimeter not received, used Santa Fe Rgnl altimeter setting and increase all MDA 200 feet; increase LNAV Cat C visibility to 1 7⁄8 SM and Circling Cat C visibility to 2 1⁄4 SM. VDP NA when using Santa Fe Muni altimeter setting.		
ASOS 118.525	ALBUQUERQUE CENTER 132.8 346.35	UNICOM 122.8 (CTAF) 0



10000	HONAS	VGSI and descent angles not coincident (VGSI Angle 3.00/TCH 36).			
CATEGORY	A	B	C	D	
LNAV MDA	7320-1	443 (500-1)	7320-1¼ 443 (500-1¼)	NA	
CIRCLING	7420-1	543 (600-1)	7420-1½ 543 (600-1½)	NA	

