

APP CRS  
**202°**

Rwy Ldg  
TDZE  
**6867**  
Apt Elev  
**6877**

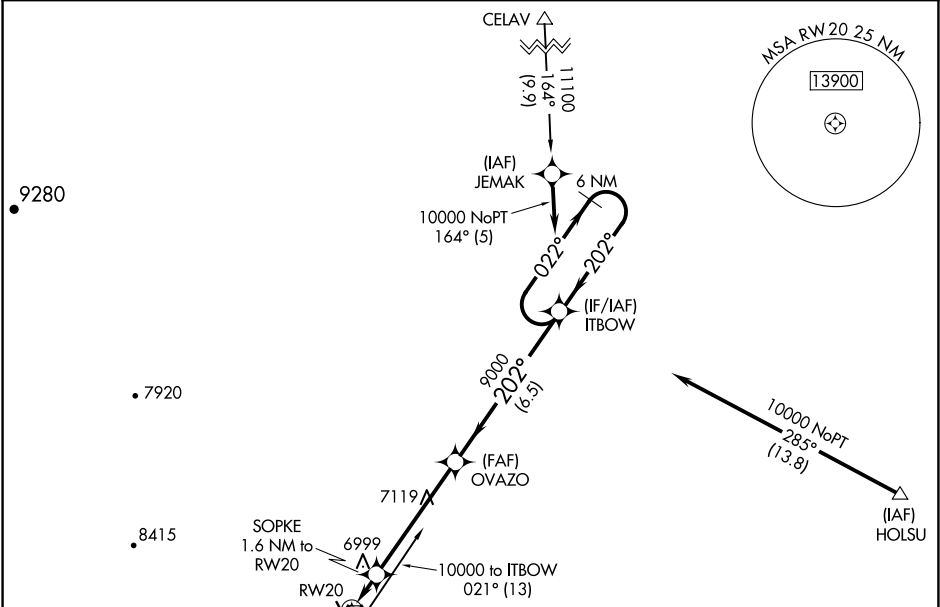
**RNAV (GPS) RWY 20**  
LAS VEGAS MUNI (LVS)

**RNP APCH-GPS.**  
When local altimeter setting not received, use Santa Fe Rgnl altimeter setting and increase all MDAs 200 feet; increase LNAV Cat C visibility to 1½ SM and Circling Cat C visibility to 2¼ SM. Straight-in minimums NA when using Santa Fe Muni altimeter setting.

**ODALS**

MISSED APPROACH: Climb to 10000 direct GAVLY and hold.

ASOS <b>118.525</b>	ALBUQUERQUE CENTER <b>132.8 346.35</b>	UNICOM <b>122.8 (CTAF) 0</b>
------------------------	---	---------------------------------



**MISSED APCH FIX**  
GAVLY  
  
022° 202°  
6 NM

**ELEV 6877** **TDZE 6867**

10000 GAVLY

SOPKE 1.6 NM to RW20  
≤3.06°  
TCH 40

RW20

OVAZO

ITBOW

6 NM Holding Pattern

022° 10000

202° 9000

7400\*

1.6 NM 4.9 NM 6.5 NM

\*7600 when using Santa Fe Muni altimeter setting.

CATEGORY	A	B	C	D
LNAV MDA	7260-¾	393 (400-¾)		NA
CIRCLING	7420-1	543 (600-1)	7420-1½ 543 (600-1½)	NA