

LAS VEGAS, NEVADA

TACAN X RWY 21L

TACAN LSV Chan 12	APCH CRS 210°	Rwy ldg TDZE Arpt Elev	21L 10,051 1865 1869	21R 10,120 1869
----------------------	------------------	------------------------------	-------------------------------	-----------------------

AL-227 (USAF)

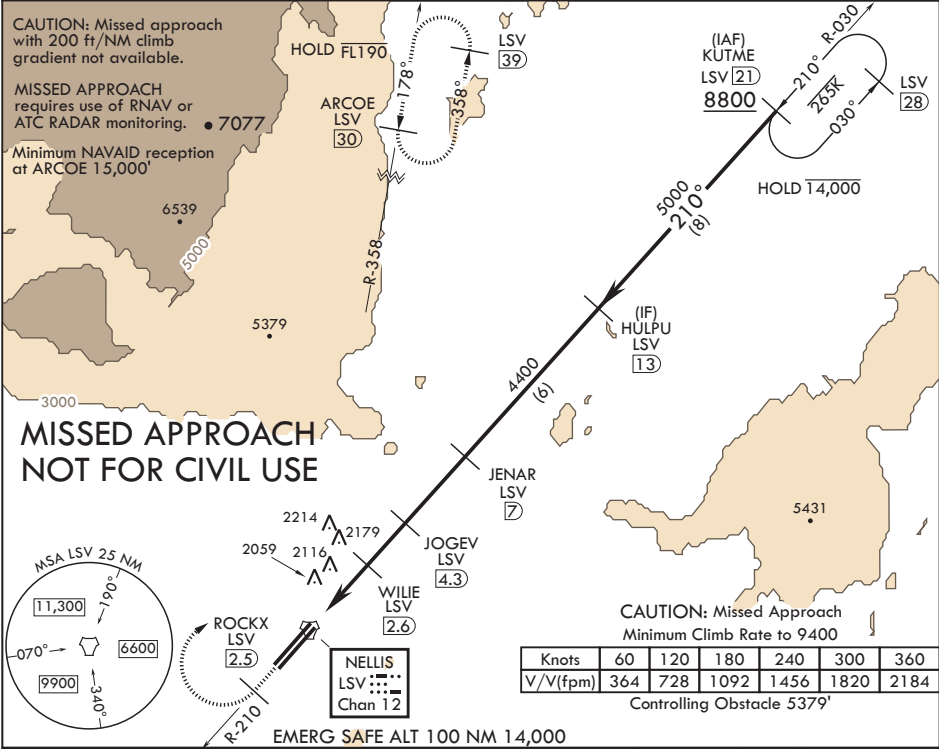
NELLIS AFB (KLSV)

⚠ * When ALS inop, increase CAT AB RVR to 55, vis to 1 mile, CAT CDE vis to 1 5/8 miles.
** Circling not authorized SE of Rwy 3R-21L.

Rwy 21L
ALSIF-1

MISSED APPROACH: Climb to 15,000, intercept LSV TACAN R-210 to 2.5 DME (ROCKX), then climbing right turn heading 043° to intercept LSV R-358 to ARCOE and hold, climb in hold to 15,000. Missed approach not for civil use.

ATIS 270.1	APP CON 124.95 273.55	TOWER 132.55 327.0	GND CON 121.8 275.8	CLNC DEL 120.9 289.4
---------------	--------------------------	-----------------------	------------------------	-------------------------



15,000' LSV R-210

ROCKX LSV 2.5

hdg 043°

VGSI and descent angles not coincident (VGSI Angle 3.00/TCH 54).

KUTME 21

5000'

210°

8800'

HULPU 13

JENAR 7

JOGEV 4.3

WILIE 2.6

3380'

4400'

2800'

1.8

1.9 NM

1.7 NM

2.7 NM

≤ 3.41° TCH 54

TACAN

KITCH 7

ELEV 1869

TDZE 21L 1865

TDZE 21R 1869

CATEGORY	A	B	C	D	E
S-21L*	2440/24	575 (600-½)	2440-1¼	575 (600-1¼)	
SIDESTEP 21R	2440-1	571 (600-1)	2440-1⅝	571 (600-1⅝)	
C CIRCLING**	2440-1 571 (600-1)	2460-1 591 (600-1)	2560-2 691 (700-2)	2840-3 971 (1000-3)	3140-3 1271 (1300-3)

HIRL all Rwys

LAS VEGAS, NEVADA

36°14'N - 115°02'W

NELLIS AFB (KLSV)

Amdt 10 10AUG23

TACAN X RWY 21L

SW-4, 07 AUG 2025 to 04 SEP 2025

SW-4, 07 AUG 2025 to 04 SEP 2025