

LOC Y RWY 21L

LOC I-DIQ 109.1	APCH CRS 209°	Rwy ldg 21L 10,051 TDZE 1865 Arpt Elev 1869	Rwy ldg 21R 10,120 TDZE 1869
--------------------	------------------	---	---------------------------------

[USAF] NELLIS AFB (KLSV)

RADAR or DME required. RNAV or RADAR required for missed apch.

* When ALS inop, increase vis to 1½ miles.
** Circling not authorized SE of Rwy 3R-21L.



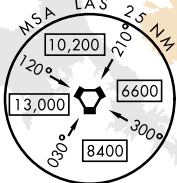
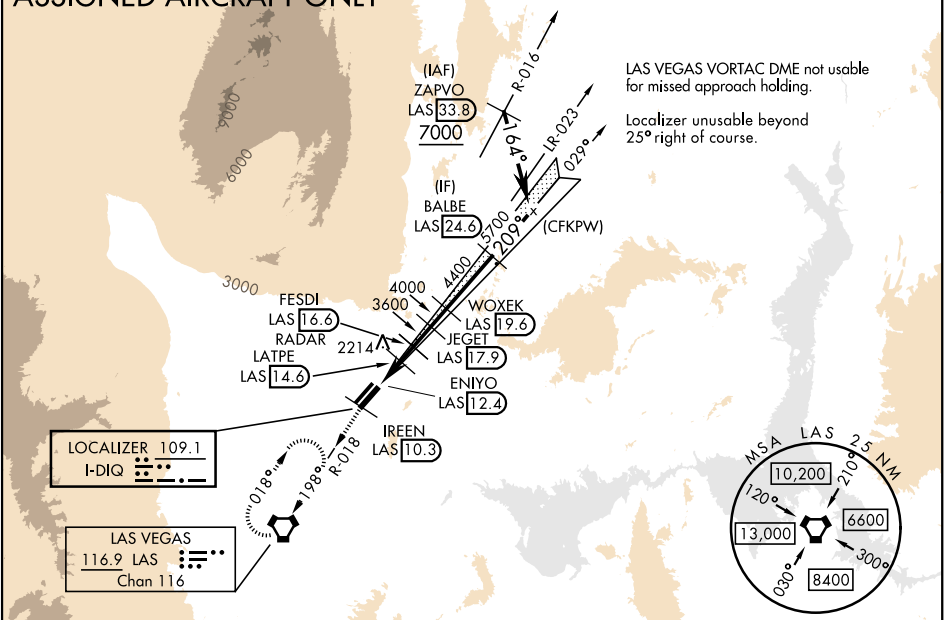
MISSED APPROACH: Climb to 8000, intercept the LAS VORTAC R-018 to 10.3 DME (IREEN), then to LAS and hold, continue climb in hold to 8000.

ATIS 270.1	APP CON 124.95 273.55	TOWER 132.55 327.0	GND CON 121.8 275.8	CLNC DEL 120.9 289.4
---------------	--------------------------	-----------------------	------------------------	-------------------------

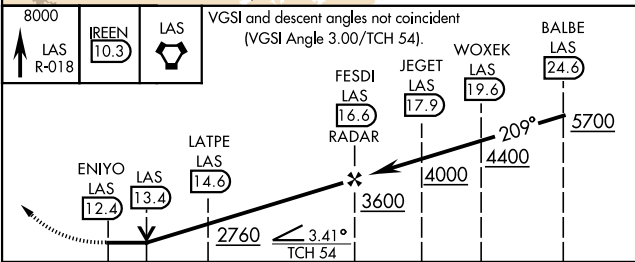
FOR USE BY NELLIS AFB
ASSIGNED AIRCRAFT ONLY

Knots	60	120	180	240	300	360
V/V(fpm)	450	900	1350	1800	2250	2700

ATC climb of 450 ft/NM to 8000

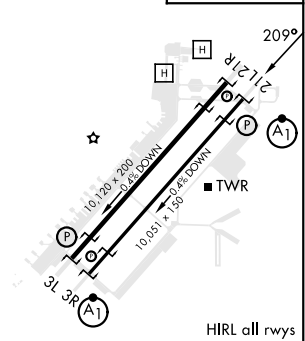


EMERG SAFE ALT 100 NM 14,000



CATEGORY	C	D	E
S-21L *	2360/50	495 (500-1)	
SIDESTEP 21R	2360-1¾	491 (500-1¾)	
CIRCLING **	2560-2 691 (700-2)	2840-3 971 (1000-3)	3140-3 1271 (1300-3)

ELEV 1869	TDZE 21L 1865
	TDZE 21R 1869



FAF to MAP 4.2 NM	Knots	60	90	120	150	180
	Min:Sec	4:12	2:48	2:06	1:41	1:24

LOC Y RWY 21L

SW-4, 07 AUG 2025 to 04 SEP 2025

SW-4, 07 AUG 2025 to 04 SEP 2025