

LAS VEGAS, NEVADA

ILS or LOC X RWY 21L

LOC I-DIQ	APCH CRS	Rwy Idg	21L	21R
109.1	209°	TDZE	10,051	10,120
		Arpt Elev	1865	1869

(USAF)

NELLIS AFB (KLSV)

DME or RADAR required.

- ▼ * When ALS inop, increase RVR to 40, vis to 3/4 mile.
** When ALS inop, increase CAT AB RVR to 55, vis to 1 mile, CAT CDE vis to 1 3/8 miles.
*** Circling not authorized SE of Rwy 3R-21L.

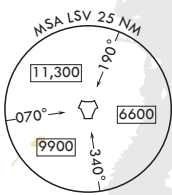
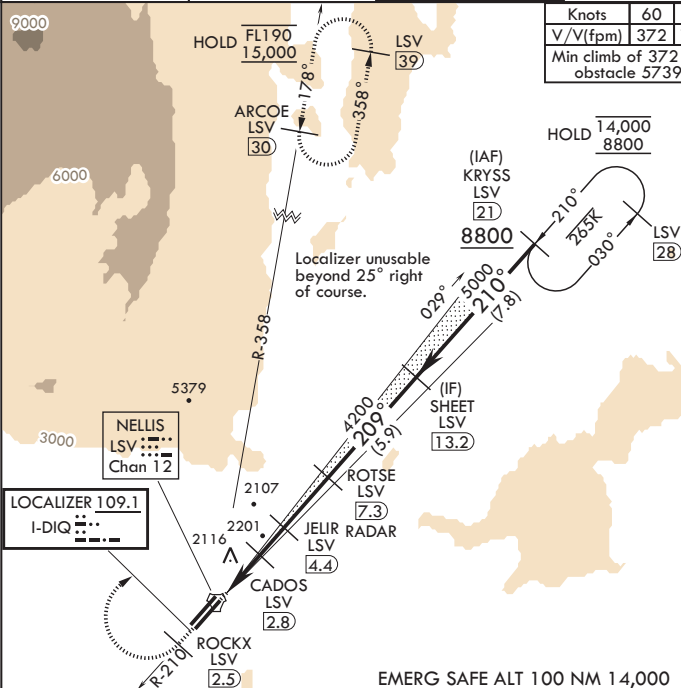


MISSED APPROACH: Climb to 15,000, intercept LSV TACAN R-210 to 2.5 DME (ROCKX), then climbing right turn heading 043° to intercept LSV R-358 to ARCOE and hold, climb in hold to 15,000. Missed approach not for civil use.

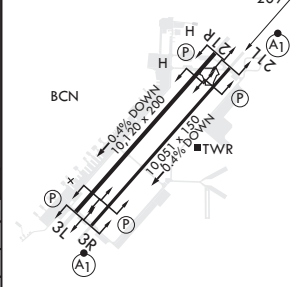
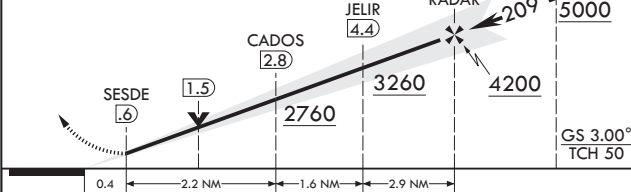
ATIS	APP CON	TOWER	GND CON	CLNC DEL*
270.1	124.95 273.55	132.55 327.0	121.8 275.8	120.9 289.4

Knots	60	120	180	240	300	360
V/V(fpm)	372	744	1116	1488	1860	2232
Min climb of 372 ft/NM to 9400 - Controlling obstacle 5739						

CAUTION: Missed approach with 200 ft/NM climb gradient not available.
MISSED APPROACH requires use of RNAV or ATC RADAR monitoring.
Minimum NAVAID reception at ARCOE 15,000 MSL.



15,000 LSV R-210	ROCKX LSV 2.5	VGSI and ILS glidepath not coincident (VGSI angle 3.00/TCH 54).	ROTSE LSV 7.3	SHEET 13.2 Intep Lczr	ELEV 1869	TDZE 21L 1865	TDZE 21R 1869
------------------	---------------	---	---------------	-----------------------	-----------	---------------	---------------



CATEGORY	A	B	C	D	E
S-ILS 21L*	2065/24	200	(200-1/2)		
S-LOC 21L**	2360/24	495 (500-1/2)	2360/50	495 (500-1)	
SIDESTEP 21R	2380-1	511 (600-1)	2380-1 3/4	511 (600-1 3/4)	
CIRCLING***	2400-1	2460-1	2560-2	2840-3	3140-3
	531 (600-1)	591 (600-1)	691 (700-2)	971 (1000-3)	1271 (1300-3)

FAF to MAP 6.7 NM						
Knots	60	90	120	150	180	
Min:Sec	6:42	4:28	3:21	2:41	2:14	

LAS VEGAS, NEVADA

36°14'N - 115°02'W

NELLIS AFB (KLSV)

Amdt 11 10JUL25

ILS or LOC X RWY 21L

SW-4, 07 AUG 2025 to 04 SEP 2025

SW-4, 07 AUG 2025 to 04 SEP 2025