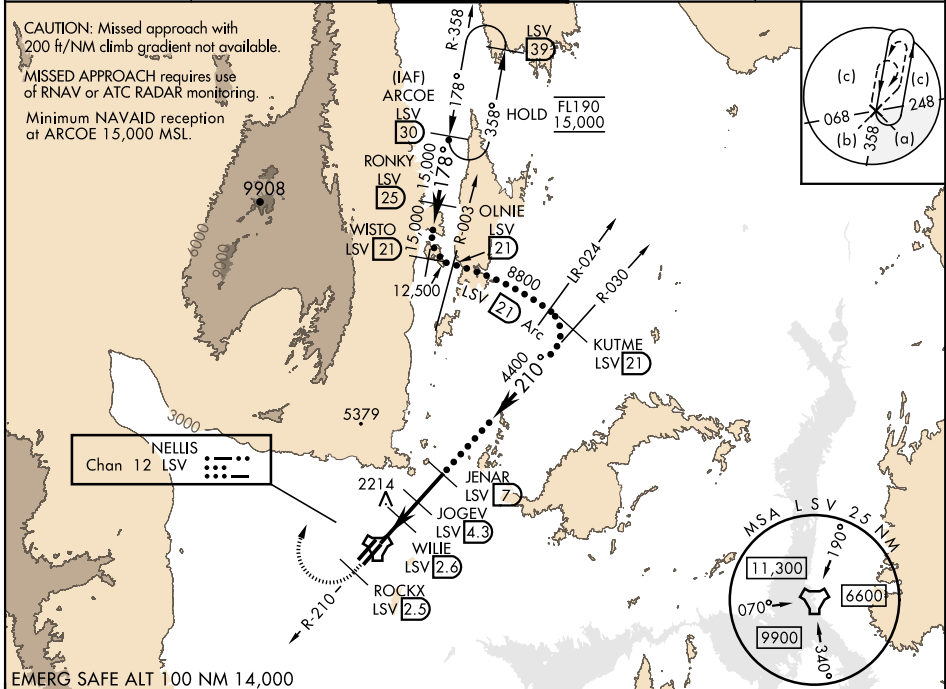


HI-TACAN Z RWY 21L

TACAN Chan 12	LSV	APCH CRS 210°	Rwy ldg 21L 10,051 TDZE 1865 Arpt Elev 1869	Rwy ldg 21R 10,120 TDZE 1869	AL-227 [USAF]	NELLIS AFB (KLSV)
V* When ALS inop, increase CAT CDE vis to 1½ miles. ** Circling not authorized SE of Rwy 3R-21L.				ALSF-1 A1	MISSED APPROACH: Climb to 15,000, intercept LSV TACAN R-210 to 2.5 DME (ROCKX), then climbing right turn heading 043° to intercept LSV R-358 to ARCOE and hold, climb in hold to 15,000. Missed approach not for civil use.	

ATIS 270.1	APP CON 124.95 273.55	TOWER 132.55 327.0	GND CON 121.8 275.8	CLNC DEL 120.9 289.4
---------------	--------------------------	-----------------------	------------------------	-------------------------



Knots	60	120	180	240	300	360
V/V(fpm)	364	728	1092	1456	1820	2184
Min climb of 364 ft/NM to 9400 - Controlling Obstacle 5739						

15,000

LSV

R-210

ROCKX

LSV

2.5

hdg

043°

ARCOE

R-358

30

VGSI and descent angles not coincident

(VGSI Angle 3.00/TCH 54).

KUTME

R-030

21

TACAN

KITCH

0.7

WILIE

1.8

JOGEV

2.6

4.3

JENAR

7

2800

3380

4400

8800

210°

3.41°

TCH 54

(from JENAR)

0.6

1.9 NM

1.7 NM

2.7 NM

CATEGORY	C		D	E
S-21L *	2440-1¼		575 (600-1¼)	
SIDESTEP 21R	2440-1⅝		571 (600-1⅝)	
CIRCLING **	2560-2 691 (700-2)	2840-3 971 (1000-3)	3140-3 1271 (1300-3)	

210°

21L 21R

H

H

P

P

P

P

A1

A1

0.6% DOWN

10/151 x 130

10/720 x 200

0.4% DOWN

TWR

3L 3R

HIRL all runways

HI-TACAN Z RWY 21L