
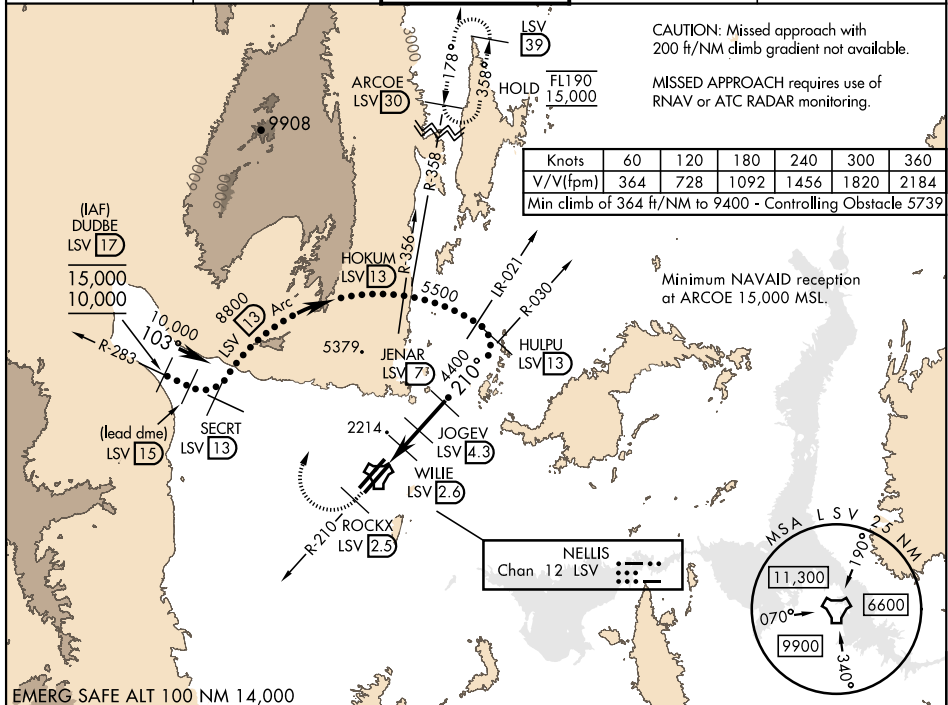


LAS VEGAS, NEVADA

TACAN LSV Chan 12	APCH CRS 210°	Rwy Idg 21L 10,051 TDZE 1865 Arpt Elev 1869	Rwy Idg 21R 10,120 TDZE 1869	AL-227 [USAF]	NELLIS AFB (KLSV)
----------------------	------------------	---	---------------------------------	---------------	-------------------

<p> <b>* When ALS inop, increase CAT CDE vis to 1½ miles.</b>  <b>** Circling not authorized SE of Rwy 3R-21L.</b> </p>	<p> <b>ALS-F-1</b>   </p>	<p> <b>MISSED APPROACH:</b> Climb to 15,000, intercept LSV TACAN R-210 to 2.5 DME (ROCKX), then climbing right turn heading 043° to intercept LSV R-358 to ARCOE and hold, climb in hold to 15,000. Missed approach not for civil use.         </p>
---	--	---

ATIS 270.1	APP CON 124.95 273.55	TOWER 132.55 327.0	GND CON 121.8 275.8	CLNC DEL 120.9 289.4
---------------	--------------------------	-----------------------	------------------------	-------------------------



15,000 LSV R-210	ROCKX LSV 2.5	hdg 043°	ARCOE R-358 30	VGSI and descent angles not coincident (VGSI Angle 3.00/TCH 54).	ELEV 1869	TDZE 21L 1865 TDZE 21R 1869
------------------------	---------------------	-------------	----------------------	---	-----------	--------------------------------

