

LAS VEGAS, NEVADA

HI-ILS or LOC Z RWY 21L

LAS VEGAS, NEVADA		21L	21R
LOC I-DIQ <u>109.1</u>	APCH CRS 209°	Rwy Idg 10,051	10,120
		TDZE 1865	1869
		Arpt Elev 1869	

- (USAF)

NELLIS AFB (KLSV)

DME or RADAR required.

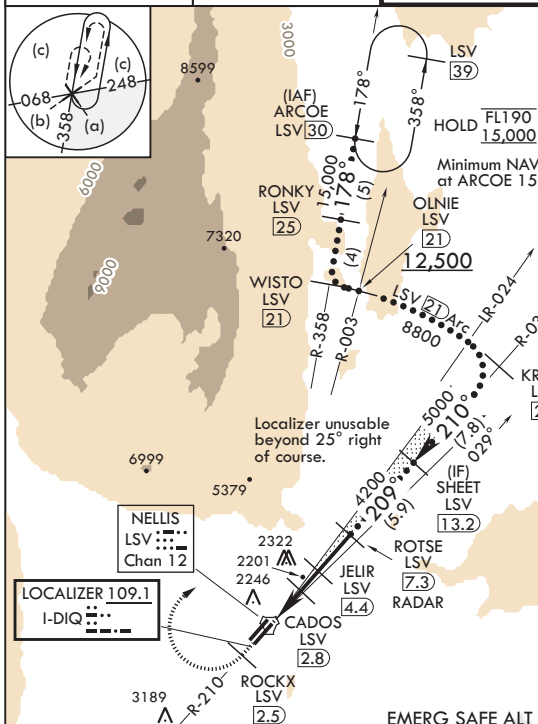
T * When ALS inop, increase RVR to 40, vis to 3/4 mile.
 ** When ALS inop, increase vis to 1 3/8 miles.
 *** Circling not authorized SE of Rwy 3R-21L.

ALSF-1



MISSED APPROACH: Climb to 15,000, intercept LSV TACAN R-210 to 2.5 DME (ROCKX), then climbing right turn heading 043° to intercept LSV R-358 to ARCOE and hold, climb in hold to 15,000. Missed approach not for civil use.

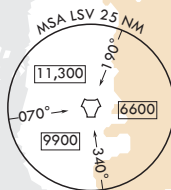
ATIS 270.1	APP CON 124.95 273.55	TOWER 132.55 327.0	GND CON 121.8 275.8	CLNC DEL★ 120.9 289.4
---------------	--------------------------	-----------------------	------------------------	--------------------------



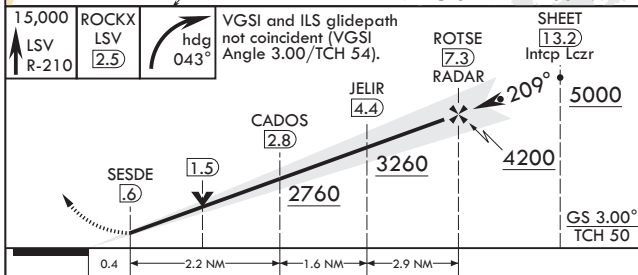
Knots	60	120	180	240	300	360
V/V(fpm)	372	744	1116	1488	1860	2232
Min climb of 372 ft/NM to 9400 - Controlling Obst 5739						

Missed Approach
requires use of RNAV or
ATC RADAR monitoring.

CAUTION: Missed approach with 200 ft/NM climb gradient not available.

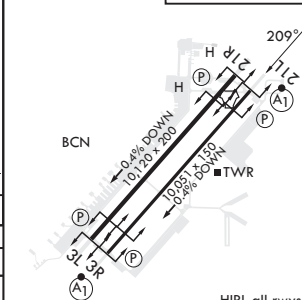


EMERG SAFE ALT 100 NM 14,000



CATEGORY	C	D	E
S-1LS 21L*	2065/24	200	(200-½)
S-LOC 21L**	2360/50	495	(500-1)
SIDESTEP21R	2380-1%	511	(600-1%)
CIRCLING***	2560-2 691 (700-2)	2840-3 971 (1000-3)	3140-3 1271 (1300-3)

ELEV 1869	TDZE 21L 1865
	TDZE 21R 1869



HIRL all rwys

FAF to MAP 6.7 NM					
Knots	120	140	160	180	200
Min:Sec	3:21	2:52	2:31	2:14	2:01

LAS VEGAS, NEVADA

36°14'N - 115°02'W

NELLIS AFB (KLSV)

Amdt 10 10JUL25

HI-ILS or LOC Z RWY 21L