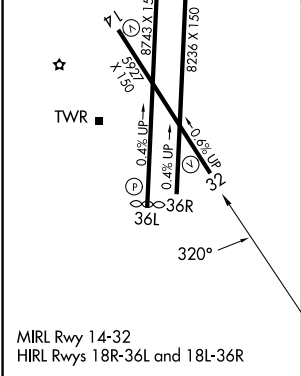
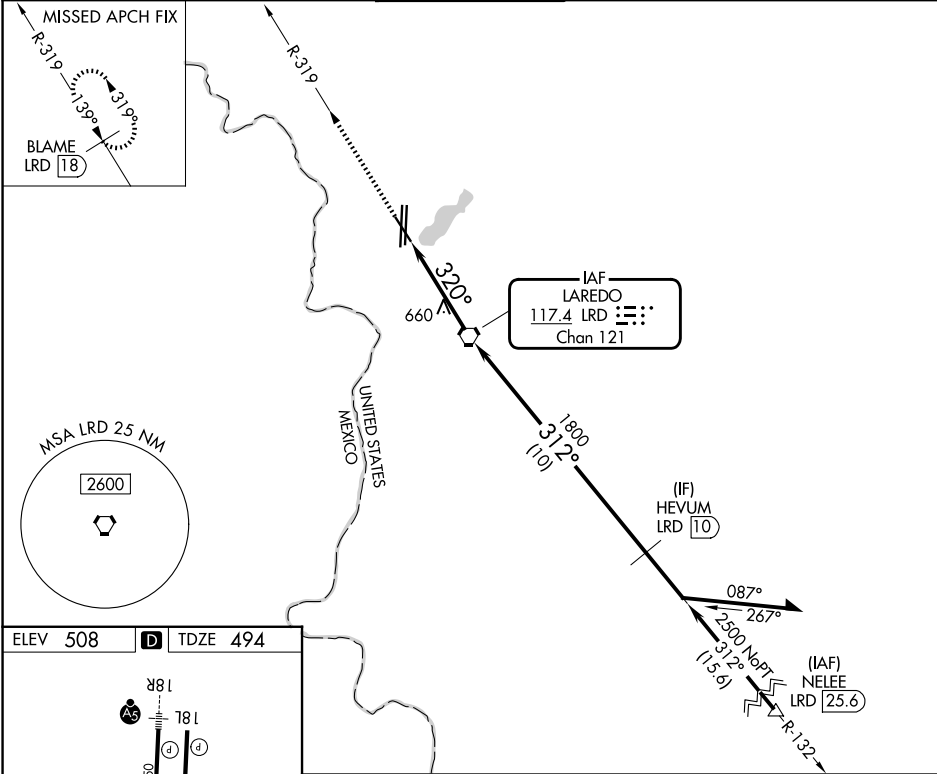


VORTAC LRD 117.4 Chan 121	APP CRS 320°	Rwy Ldg TDZE 494 Apt Elev 508
---	------------------------	---

VOR or TACAN RWY 32
LAREDO INTL (LRD)

<div><div><div>V</div><div>A</div></div><div>Circling NA west of Rwy 14 and 36L. Rwy 32 helicopter visibility reduction below ¾ SM NA. DME required.</div></div>			MISSED APPROACH: Climb to 2600 on LRD VORTAC R-319 to BLAME/LRD 18 DME and hold.	
ATIS 125.775	HOUSTON CENTER 127.8 307.2	LAREDO TOWER★ 120.1(CTAF) 0 257.9	GND CON 121.8	UNICOM 122.95



2600 BLAME LRD 18		LRD VORTAC		Remain within 15 NM	
R-319		320°		132°	
LRD 2.8		3.01° TCH 55		2500	
LRD 4		1800		312°	
1.2		2.8 NM		VGSI and descent angles not coincident (VGSI Angle 3.00/TCH 71).	
CATEGORY	A	B	C	D	E
S-32	920-1	426 (500-1)	920-1¼	426 (500-1¼)	
CIRCLING	940-1 432 (500-1)	980-1 472 (500-1)	1100-1½ 592 (600-1½)	1200-2¼ 692 (700-2¼)	1200-2½ 692 (700-2½)