

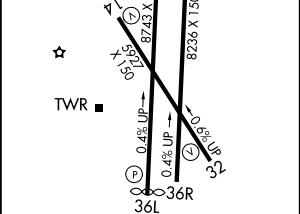
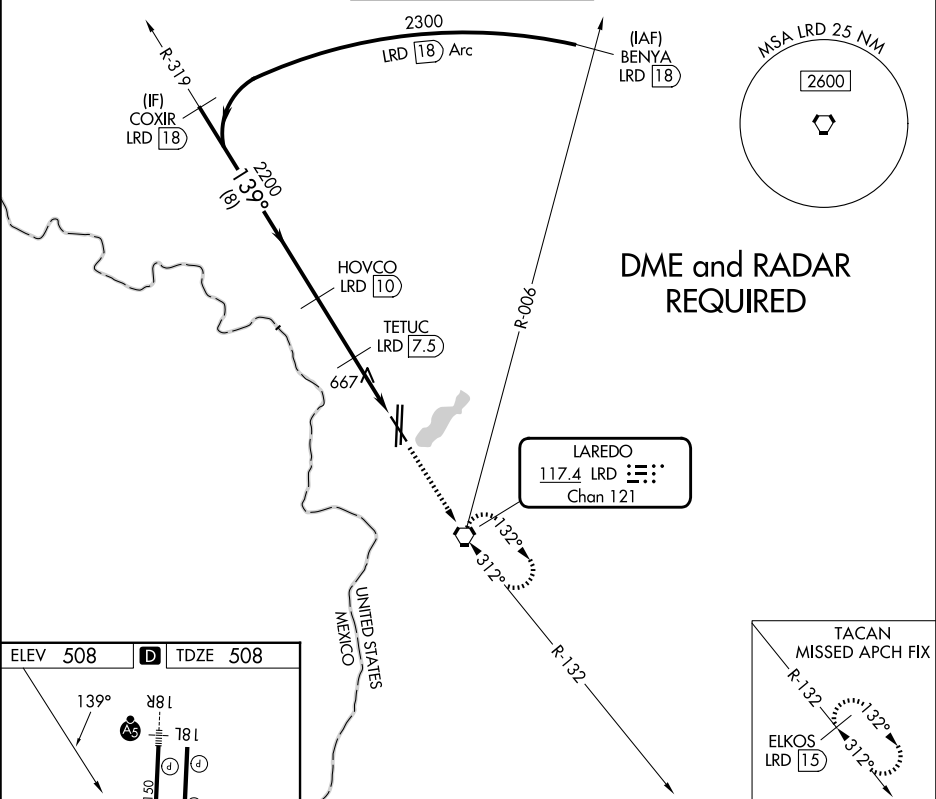
VORTAC LRD	APP CRS	Rwy Ldg	5927
117.4	139°	TDZE	508
Chan 121		Apt Elev	508

VOR or TACAN RWY 14
LAREDO INTL (LRD)

⚠ Circling NA west of Rwy 14 and 36L.
⚠ DME required.

MISSED APPROACH: Climb to 2500 direct LRD VORTAC and hold, continue climb-in-hold to 2500 (TACAN aircraft continue on LRD VORTAC R-132 to ELKOS/15 DME and hold SE, right turn, 312° inbound).

ATIS 125.775	HOUSTON CENTER 127.8 307.2	LAREDO TOWER ★ 120.1 (CTAF) 0 257.9	GND CON 121.8	UNICOM 122.95
-----------------	-------------------------------	--	------------------	------------------



ELEV 508	D	TDZE 508
MIRL Rwy 14-32 HIRL Rwy 18R-36L and 18L-36R		

