

WAAS Ch 82599 W18A	APP CRS 178°	Rwy Ldg 8743 TDZE 504 Apt Elev 508
--	------------------------	---

RNAV (GPS) RWY 18R

LAREDO INTL (L.R.D)

▼

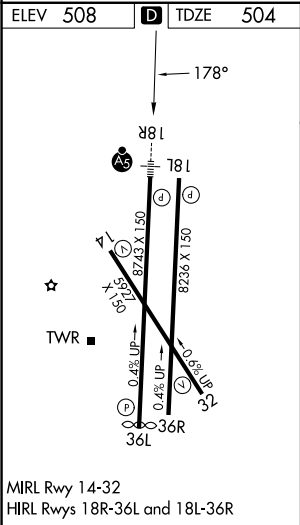
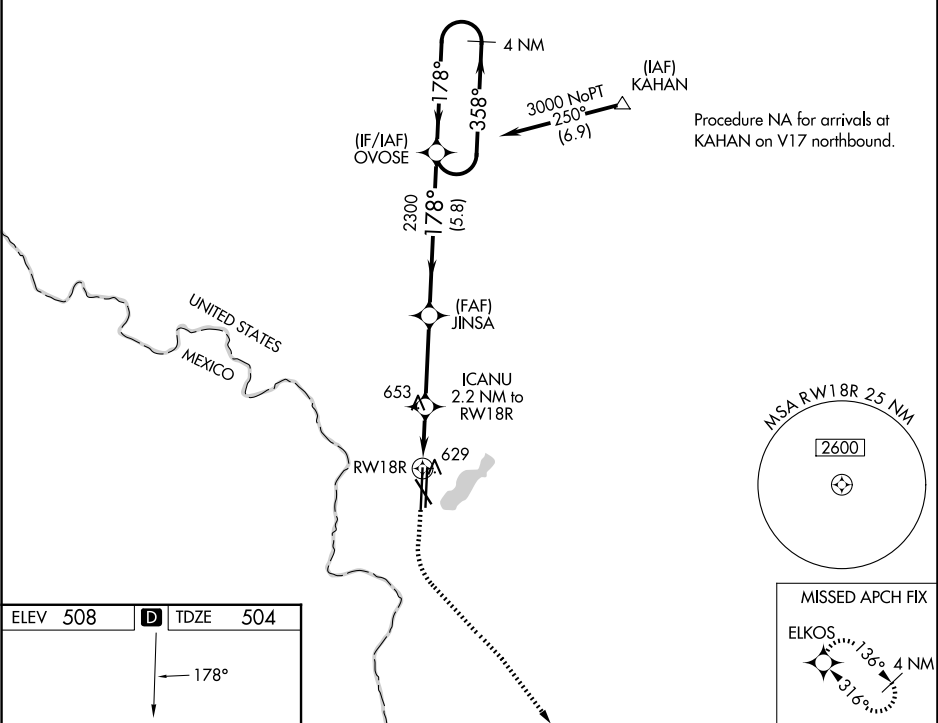
▲

For uncompensated Baro-VNAV systems, LNAV/VNAV NA below 1°C (34°F) or above 54°C (130°F). Circling NA West of Rwy 14 and 36L. DME/DME RNP-0.3 NA. For inop ALS, increase LPV Cat E visibility to ¾ SM, LNAV/VNAV all Cats visibility to ⅞ SM, and LNAV Cats C/D/E to 1 SM.

MALSR

MISSED APPROACH:
Climb to 1000 then climbing left turn to 2500 direct ELKOS and hold.

ATIS 125.775	HOUSTON CENTER 127.8 307.2	LAREDO TOWER* 120.1(CTAF) 257.9	GND CON 121.8	UNICOM 122.95
------------------------	--------------------------------------	---	-------------------------	-------------------------



1000 ↑	2500 ↷	ELKOS ✦	VGSI and RNAV glidepath not coincident (VGSI Angle 3.00/TCH 50).			4 NM Holding Pattern
*LNAV only						
ICANU 2.2 NM to RW18R		JINSA 2300		OVOSE		358° →
*1 NM to RW18R		*1260		← 178°		3000
RW18R		2300		GP 3.00° TCH 57		
1 NM		1.2		3.3 NM		5.8 NM
CATEGORY		A		B		C
LPV DA		704-½ 200 (200-½)				
LNAV/ VNAV DA		810-½ 306 (400-½)				
LNAV MDA		880-½ 376 (400-½)		880-⅝ 376 (400-⅝)		
CIRCLING		940-1 432 (500-1)		980-1 472 (500-1)		1100-1½ 592 (600-1½)
				1200-2¼ 692 (700-2¼)		1200-2½ 692 (700-2½)

SC-3, 07 AUG 2025 to 04 SEP 2025

SC-3, 07 AUG 2025 to 04 SEP 2025